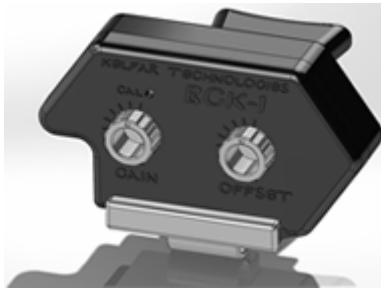


KELFAR TECHNOLOGIES BREATH
CONTROLLER

(BCK-1)



GUIDE/MANUAL

Version 1.00

2013

Breath Controller BCK-1

Kelfar Technologies Breath Controller (BCK-1)

Kelfar Technologies' Breath Controller (BCK-1) is designed with the professional musician in mind. Unlike others on the market, our breath controller can be mounted on your own comfortable headset. You're not locked into using the one that comes with the unit. You can also mount the BCK-1 on a harmonica stand or similar stand if you prefer not to use a headset.

The BCK-1 makes it easier than ever for musicians to control the volume of sound during a performance. Each aspect of the BCK-1 is customizable and easy to adjust. Use your breath to make synthesizer sounds loud or soft, and set the BCK-1 to your own specifications with one simple adjustment.

Please keep this manual in a safe place and refer to it if you have any questions. You may also wish to visit our website at <http://kelfar.net> for more great accessories, sound libraries and products for musicians.

How to Use the Kelfar Technologies BCK-1

1. Remove the components from the packaging materials.
2. Mount the BCK-1 to your favorite headset or stand.
3. Attach the Lanyard to the BCK-1.
4. Connect the right angle stereo cable to the BCK-1.

Breath Controller BCK-1

5. Connect the stereo cable from the BCK-1 to a compatible synthesizer with BC input or a converter box such as the BCXP PRO. (Check the compatibility checklist section in this manual).
6. Blow hard into the device to make the sound louder.
7. Blow softly to produce quiet sounds.
8. Adjust the GAIN and OFFSET controls until you are satisfied with the sound.
9. Adjust the BC Control Slide mouthpiece to reduce airflow, when desired.
10. Clean as needed.

Materials

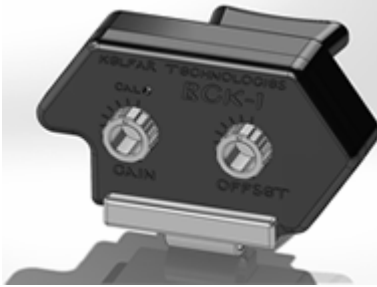
Kelfar Technologies Breath Controller is made from pharmaceutical grade plastic. It is microbe resistant. However, due to health laws, once the product is opened, it cannot be returned.

The Kelfar Breath Controller comes with the Breakaway Lanyard. It does not come with a headset. It can be mounted on any standard headset that fits you comfortably. It can also be mounted on a harmonica or microphone stand.

Breath Controller BCK-1

How to Use the Kelfar Technologies Breath Controller

Gain and Offset



Both the gain and offset are set at average values from the factory. You can adjust the values to customize your Breath Controller.

1) Gain Control (Gain)

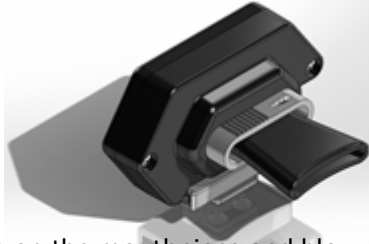
The gain control adjusts the device's sensitivity. Turn the knob counterclockwise to increase sensitivity; a lighter breath produces a bigger volume change. Turn the knob clockwise to decrease sensitivity.

2) Offset Value Control (Offset)

Turn the knob clockwise to raise the offset value. The offset value is the sound made without blowing into the mouthpiece. Turn the knob counterclockwise to reduce the offset value.

Breath Controller BCK-1

Mouthpiece



3) Mouthpiece

Place your mouth on the mouthpiece and blow to adjust the sound volume while you play. The drain control cap at the end of the mouthpiece can be moved to adjust how much air exits.

CALI. (Calibration)

Each Kelfar BCK-1 has been individually tested and calibrated for accurate and consistent volume control. The calibration on the Kelfar Breath Controller should only be set by a qualified engineer.

Accessories (included)



1) Connecting Plug (supplied 1/8" stereo cable 6ft'/1.8m)

The connecting plug connects to any standard breath controller jack on a synthesizer, MIDI keyboard or similar device.

2) Breakaway Lanyard



The breakaway lanyard offers an easy way to hold, connect and disconnect the Kelfar Breath Controller.

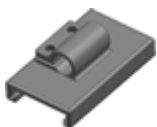
Breath Controller BCK-1

3) FLEX Arm Mini Mount



The Flex Arm mini mount can be mounted to any headset or flexible arm. The Breath Controller slides easily onto the mini mount for fast equipment changes.

4) Flex Arm Clip



Use the Flex Arm Clip to slide the Kelfar Breath Controller onto your headset, the breakaway lanyard, or a gooseneck-type flexible arm. Like the Mini Mount, the Arm Clip makes it easy to change from the Kelfar Breath Controller to other equipment and back again.

ONE YEAR LIMITED WARRANTY FROM PURCHASE DATE.

MADE IN THE USA.

Kelfar Technologies

<http://www.kelfar.net>

support@kelfar.net

PHONE: 1-707-664-9892

FAX: 1-707-795-8693