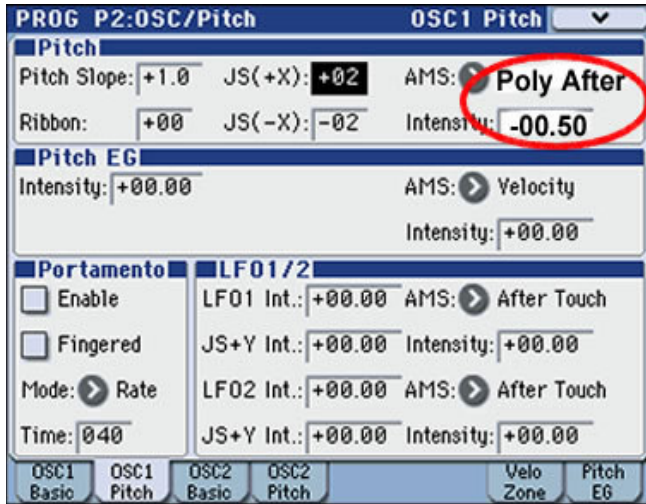


Setup the Korg M3 with AK-2 Pro

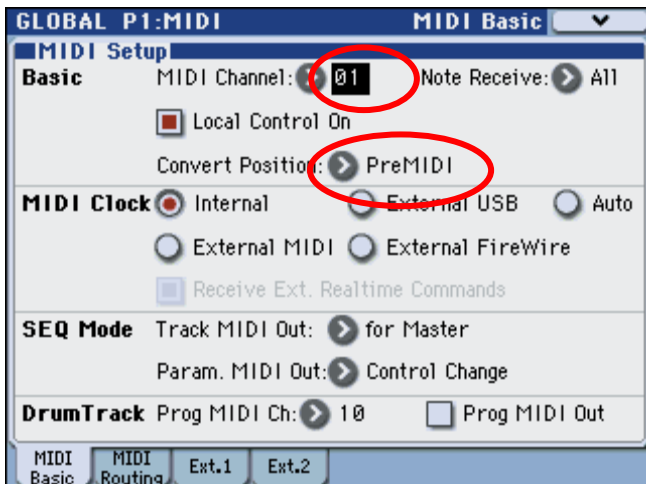
Making your own sound set to work with AK-2 Pro

1. Select a Program that you want to work with the AK-2 Pro
2. Press **PAGE SELECT**
3. SELECT **P2/OSC PITCH**
4. SELECT **OSC1/ Pitch** or **OSC2/Pitch**
5. MAKE AMS to **Poly After** and the Intensity to **-00.50** (cents) as show below



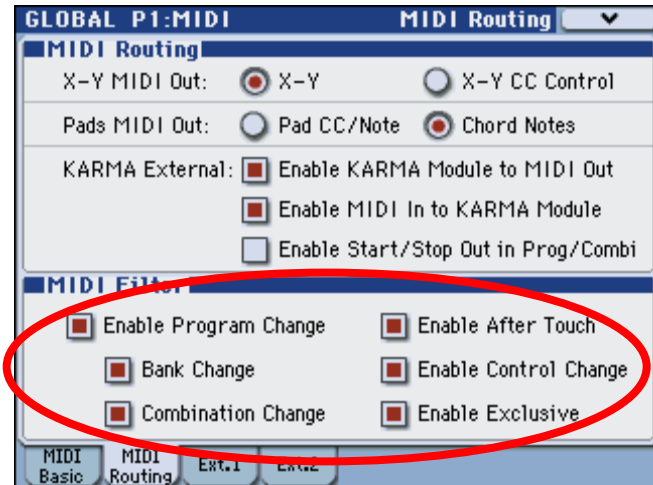
Note: if the program is using two OSC then make sure you set them both to PolyAfter the Intensity for both is = -00.50

6. SAVE YOUR PROGRAM or WRITE IT (select the down arrow/upper right corner).
7. Select GLOBAL to set the TRANSPOSE to PREMIDI. Midi Channel = 01.
8. Select MIDI



9. Select Midi Routing

10. Make sure Midi Filter is selected for all of them (as shown in the image below)



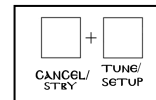
11. Write Global Settings. Select the arrow down >Write Global Setting.

The **Write Global Setting** dialog box will appear.



Programming the AK-2 Pro

Press both the CANCEL/STBY and TUNE/SETUP buttons



➤ Primary Instrument

The Display shows **P1**

1. Press "C"

The Display shows **P2**

2. Press "G".

The Display shows the midi channel number i.e **00 1**

Notes: Make sure that the AK-2 Pro's midi channel is the same as the Korg M3's midi channel.

Use the Transpose buttons of the AK-2 Pro to select the appropriate midi channel.

3. Press Tune/Setup (yellow button)

4. If you do not want wish to Program the Secondary instrument then press CANCEL/STBY.