

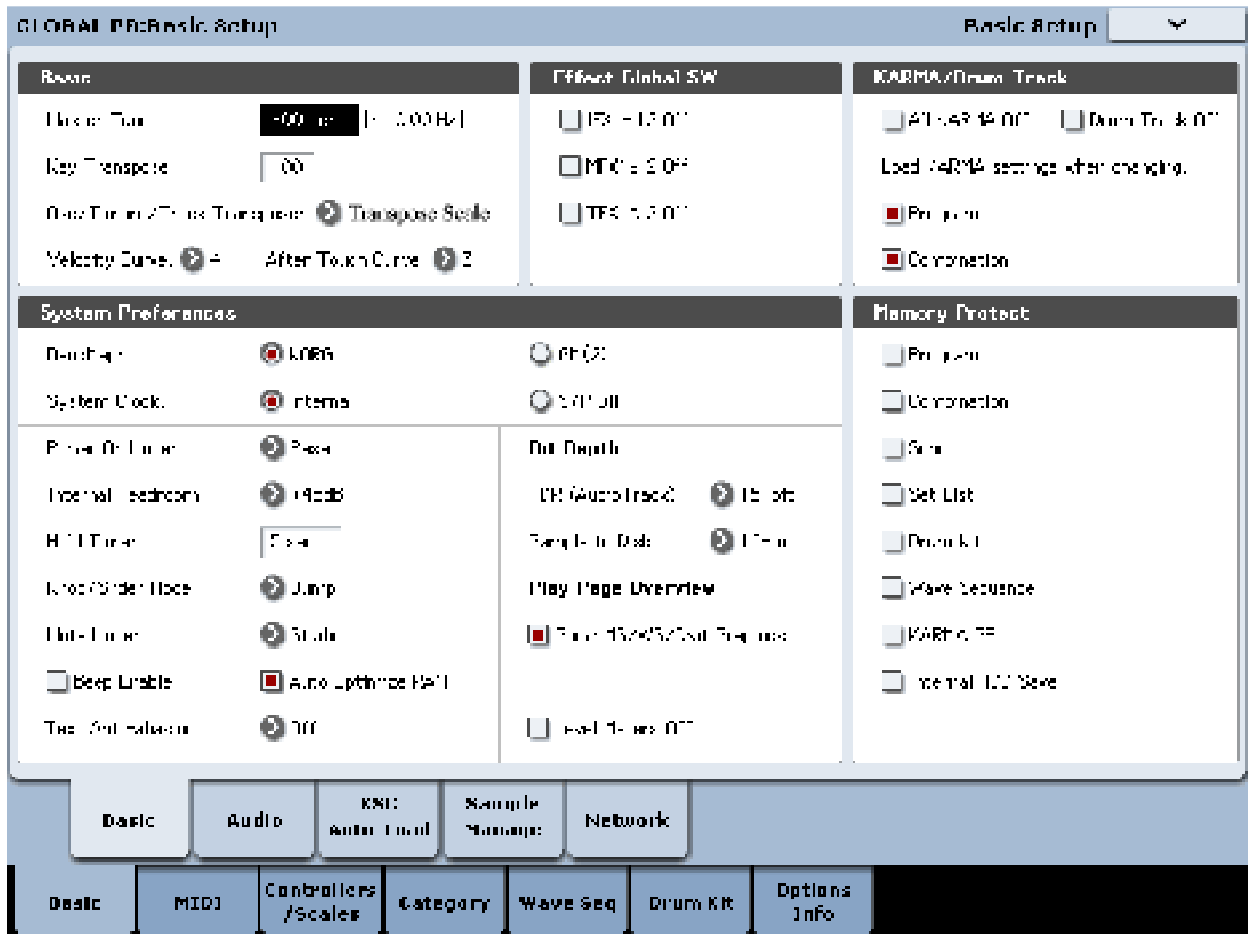
EXs-170 Maestro
Voice Name List



Kelfar Technologies
Karim El-Far
7486 Boris Court
Rohnert Park, CA 94928
USA
Phone: (707) 664-9892
Email: info@kelfar.net

Before using the EXs-170 Maestro, you have to make sure that Korg Kronos has the following suggested default **Global** setup:

1. Press the button **Global**
2. Press the tab **Basic** on the touch-screen to access the **Global P0: Basic Setup**



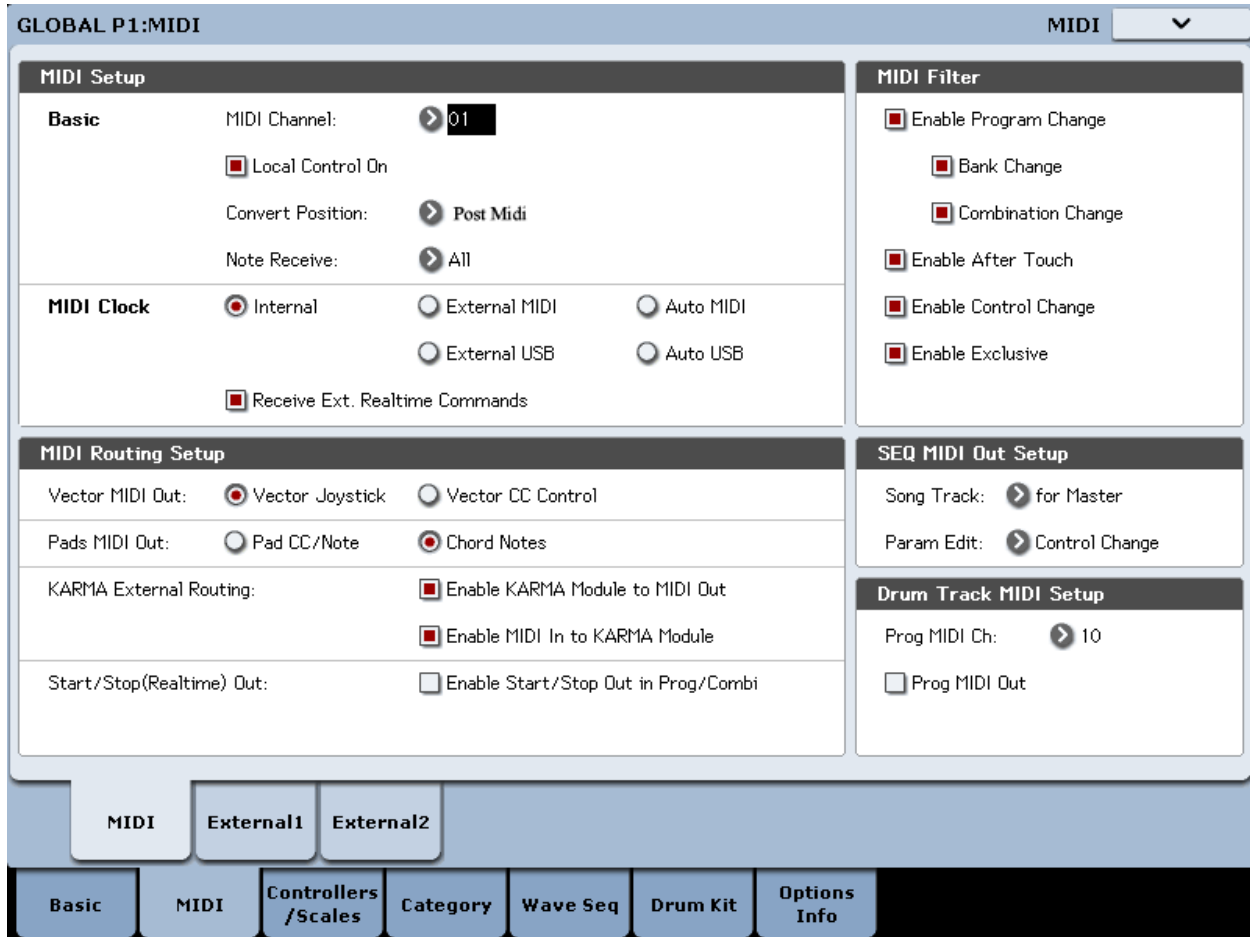
By default the **Osc/Timbre/Track Transpose** is set to "Works Within Scale". In order for the EXs-170 Maestro sound library to work properly, it is necessary to set the **Osc/Timbre/Track** to "Transposes Scale".

Be sure to **Write Global Setting** when modifying the data as follows:

1. Select **Write Global Setting** from the drop-menu, a dialog box will appear.
2. Press **OK** to write the data, or press cancel without writing the data.

You can also use the **SEQUENCER REC/WRITE** switch to write data in the same way as the **Write Global Setting** command.

1. Press the button **Global**
2. Press the tab **Midi** on the touch-screen to access the **GLOBAL P1:MIDI**



By default the **Convert Position** is set to "Pre Midi". In order for the EXs-170 Maestro sound library to work properly, it is necessary to set the **Convert Position** to "Post Midi".

Be sure to **Write Global Setting** when modifying the data as follows:

1. Select **Write Global Setting** from the drop-menu, a dialog box will appear.
2. Press **OK** to write the data, or press cancel without writing the data.

You can also use the **SEQUENCER REC/WRITE** switch to write data in the same way as the **Write Global Setting** command.

For your convenience, we have enabled the RT KNOBS/KARMA (LED IS ON) to take control of the sound in realtime. However, check page #6 for more assignable knobs, switches, and programs with Karma GE control.

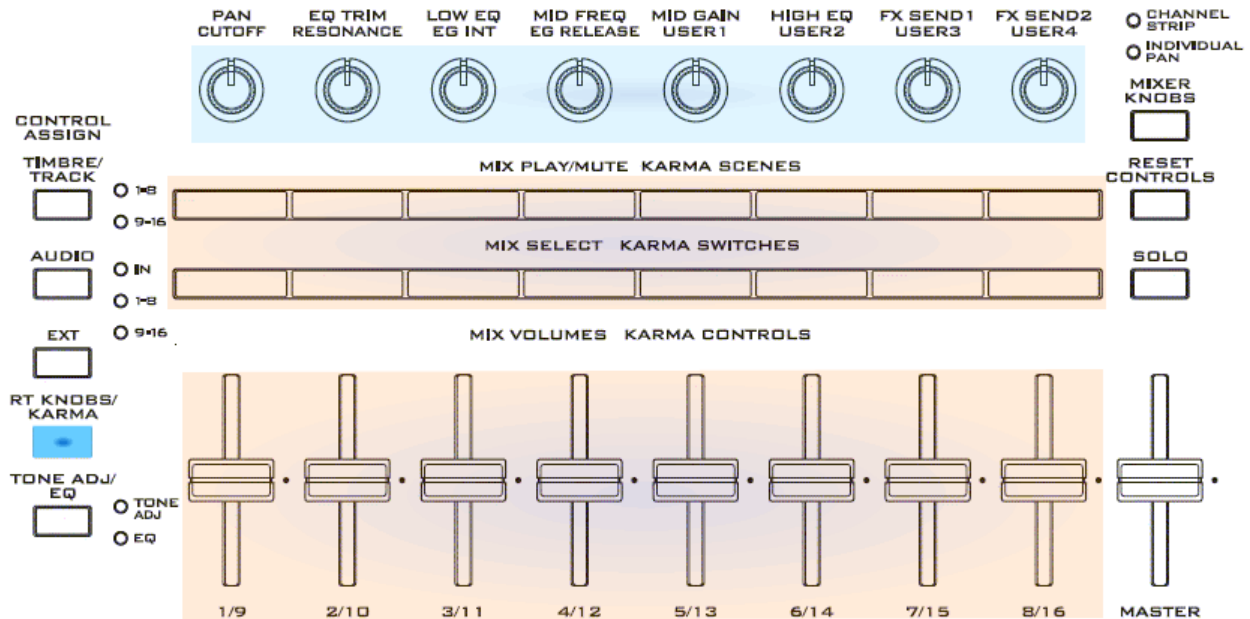
From Korg Kronos Operation Guide:

"The **Realtime Knobs** are a traditional feature of Korg workstations, combining modulation, quick edits, and hands-on control.

"In **RT KNOBS/KARMA** mode, **Knobs 1-4** have dedicated functions, as printed on the front panel: **Filter Cutoff**, **Filter Resonance**, **Filter EG Intensity**, and **Release Time**. All of these correspond to standard MIDI CCs."

Common Realtime Controls: Knobs, Switches, Joystick, Vector Joystick, and Ribbon:

- Knob 7(USER3):** MFX1
- Knob 8(USER4):** MFX2
- SW1:** (Dynamics Control, page 6)
- SW2:** (Dynamics Control, page 6)
- JS + Y:** (Dynamics Control, page 6)
- JS - Y:** (Dynamics Control, page 6)
- Ribbon:** (Dynamics Control, page 6)
- VJS +X:** (Dynamics Control, page 6)



Voice Name List

Programs-UEE

U-EE000 A.OUD KELFAR KM
U-EE001 E.OUD KELFAR KM
U-EE002 A.KANUN KELFAR KM (STEREO)
U-EE003 A.Buzuq KELFAR KM (STEREO)
U-EE004 A.Buzuq+Bass KELFAR KM (STEREO)
U-EE005 Buzuk Taksim KELFAR KM (STEREO)
U-EE006 E.Violin LGT KELFAR KM
U-EE007 E.Violin P.LG KELFAR KM
U-EE008 E.Violin M.LG KELFAR KM
U-EE009 E.Violin LG KELFAR KM
U-EE010 E.Violin AKL KELFAR KM
U-EE011 E.Violin SLAT KELFAR KM
U-EE012 E.Violin SVib KELFAR KM
U-EE013 E.Violin Brd KELFAR KM
U-EE014 E.Violin BrdR KELFAR KM
U-EE015 Taksim Violin KELFAR KM
U-EE016 Nay KELFAR KM
U-EE017 Nay La/A KELFAR KM
U-EE018 Kawala KELFAR KM
U-EE019 SI Kawala Vib KELFAR KM
U-EE020 Kawala Expressive 1
U-EE021 Kawala Expressive 2
U-EE022 Kawala Expressive SFX
U-EE023 Kasab KELFAR KM
U-EE024 Dynamic Kasab KELFAR KM
U-EE025 Kawala Kasab KELFAR KM
U-EE026 Real Mejwiz F/FA <E-B>
U-EE027 Real Mejwiz Tuned <E-E'>
U-EE028 Real Arghool F/FA <E-B>
U-EE029 Real Arghool Tund <E-E'>
U-EE030 A.OUD PHRASES C2-G#2
U-EE031 OUD PHRASES C2-C#3
U-EE032 A.KANUN PHRASES C2-F2 (STEREO)
U-EE033 A.BUZUQ PHRASES C2-G3 (STEREO)
U-EE034 A.VIOLIN PHRASES C2-A#2
U-EE035 NAY PHRASES C2-D5
U-EE036 KAWALA PHRASES C2-C#4
U-EE037 A.BUZUQ IMPROV C2-G#2
U-EE038 GO TO COMBI U-E 000

Combi-UE

U-E000 EXS-170 Maestro Strings1 (STEREO)
U-E001 EXS-170 Maestro Strings2 (STEREO)
U-E002 EXS-170 Maestro Strings3 (STEREO)
U-E003 A.Oud + Improv C2-B3
U-E004 A.Kanun + Improv C2-F#3 (STEREO)
U-E005 A.Buzuq + Improv C2-C3 (STEREO)
U-E006 Real Mejwiz Drone"F3"
U-E007 Real Arghool Drone"F3"

Drum Kits (PHRASES)

U-EE000 A.OUD PHRASES
U-EE001 E.OUD PHRASES
U-EE002 A.KANUN PHRASES
U-EE003 A.BUZUQ PHRASES
U-EE004 E.VIOLIN PHRASES
U-EE005 NAY PHRASES
U-EE006 KAWALA PHRASES
U-EE007 A.BUZUQ PASSAGE

Wave Sequences

U-EE000 Kelfar A.Oud DwnUp
U-EE001 Kelfar A.Oud Trm/Slide
U-EE002 Kelfar A.Oud Tremolo L
U-EE003 Kelfar E.Oud DwnUp
U-EE004 Kelfar E.Oud Trm/Slide
U-EE005 Kelfar E.Oud Tremolo L
U-EE006 Kelfar A.Buzıq DwnUp
U-EE007 Kelfar A.Buzıq Trm/Slide
U-EE008 Kelfar A.Buzıq Tremolo L
U-EE009 Kelfar A.Oud Hd/Vibe
U-EE010 Kelfar E.Oud Hd/Vibe
U-EE011 Kelfar A.Kanun Inside VS
U-EE012 Kelfar A.Kanun Trm/Slide
U-EE013 Kelfar A.Kanun Tremolo L
U-EE014 Kelfar Buzıq Gliss1/Vibe
U-EE015 Kelfar E.Violin DwnUp
U-EE016 Kelfar E.Violi Trm/Slide
U-EE017 Kelfar E.Violin Pizz
U-EE018 Kelfar E.Violin Legato C
U-EE019 Kelfar E.Violin AtLegato
U-EE020 Kelfar E.Violin Bridge
U-EE021 Kelfar Nay <> TRILL
U-EE022 Kelfar KAWALA <> TRILLMF
U-EE023 Kelfar KAWALA <> TRILLPF
U-EE024 Kelfar Kawala <> Gliss
U-EE025 Kelfar E.Violin Bridge L
U-EE026 Kelfar SLOWKAWALA TRILPF
U-EE027 E.Saz Pulse
U-EE028 Kelfar Violin EX
U-EE029 Kelfar Arghool -5c
U-EE030 Kelfar NayLA <> TRILL
U-EE031 Init Wave Sequence

AMS (ALTERNATE MODULATION SOURCE)

U-EE000 E.OUD KELFAR KM

SW1 Crescendo
SW2 Glide
VJS -X Velocity Hard Attack
JS +Y Accented Tremolo
JS -Y Loop Tremolo
Velocity Vibrato

U-EE001 E.OUD KELFAR KM

SW1 Crescendo
SW2 Glide
VJS -X Velocity Hard Attack
JS +Y Accented Tremolo
JS -Y Loop Tremolo
Velocity Vibrato

U-EE002 A.KANUN KELFAR KM (STEREO)

SW1 Crescendo
SW2 Glide, **Velocity** Key Switches
VJS -X Kanun Pluck (**inside**)
JS +Y Arabic Tremolo
JS -Y Turkish Tremolo
Velocity Vibrato

U-EE003 A.Buzıq KELFAR KM (STEREO)

SW1 Short Tremolo
SW2 Glide1
VJS -X Glide2
JS +Y Medium Tremolo
JS -Y Long Tremolo
Velocity Vibrato

U-EE004 A.Buzıq+Bass KELFAR KM (STEREO)

SW1 Short Tremolo
SW2 Glide1
VJS -X Glide2
JS +Y Medium Tremolo
JS -Y Long Tremolo
Velocity Vibrato

U-EE005 Buzık Taksim KELFAR KM (STEREO)

SW1 Octave (default SW1 is ON)

U-EE006 E.Violin LGT KELFAR KM

SW1 Octave Down
SW2 Staccato
Mono Legato

U-EE007 E. Violin P.LG KELFAR KM

SW1 Octave Down
SW2 Staccato
Poly Legato

U-EE008 E. Violin M.LG KELFAR KM

SW1 Octave Down
SW2 Staccato
Mono Legato

U-EE009 E. Violin LG KELFAR KM

SW1 Trill (dual function) SW1+JS +YTrill
SW2 Trill
JS +Y Tremolo
JS -Y Pizzicato
Velocity Staccato

U-EE010 E. Violin AKL KELFAR KM

SW1 Trill (dual function) SW1+JS +YTrill
SW2 Trill
JS +Y Tremolo
JS -Y Pizzicato
Velocity Staccato

U-EE011 E. Violin SLAT KELFAR KM

SW1 Trill (dual function) SW1+JS +YTrill
SW2 Trill
JS +Y Tremolo
JS -Y Pizzicato
Velocity Staccato

U-EE012 E. Violin SVib KELFAR KM

SW1 Trill (dual function) SW1+JS +YTrill
SW2 Trill
JS +Y Tremolo
JS -Y Pizzicato
Velocity Staccato

U-EE013 E. Violin Brd KELFAR KM

SW1 Trill (dual function) SW1+JS +YTrill
SW2 Trill
JS +Y Tremolo
JS -Y Pizzicato
Velocity Staccato
Ribbon Bridge Sound

U-EE014 E. Violin BrdR KELFAR KM

SW1 Trill (dual function) **SW1+JS +Y**Trill
SW2 Trill,
JS +Y Tremolo
JS -Y Pizzicato
Velocity Staccato
Random Modulation (Bridge Sound)

U-EE015 Taksim Violin KELFAR KM

SW1 Octave Down

U-EE016 Nay KELFAR KM

SW1 Trill
SW2 Glissando

U-EE017 Nay La/A KELFAR KM

SW1 Trill
SW2 Glissando

U-EE018 Kawala KELFAR KM

SW1 Fast Trill
SW2 Slow Trill
VJS +X Velocity Slow Gliss

U-EE019 Sl Kawala Vib KELFAR KM

SW1 Fast Trill
SW2 Slow Trill
VJS +X Velocity Slow Gliss

U-EE020 Kawala Expressive 1

SW1 Octave Down

U-EE021 Kawala Expressive 2

SW1 Octave Down

U-EE022 Kawala Expressive SFX

SW1 Octave Down
Notes: G5-C#6

U-EE023 Kasab KELFAR KM

SW1 Octave Down, **SW2** Octave Up
Velocity Flutter

U-EE024 Dynamic Kasab KELFAR KM

SW1 Octave Down, SW2 Octave Up
Velocity Flutter

U-EE025 Kawala Kasab KELFAR KM

SW1 Octave Down, SW2 Octave Up
Velocity Flutter

U-EE026 Real Mejjwiz F/FA <E-B>

U-EE027 Real Mejjwiz Tuned <E-E'>

U-EE028 Real Arghool F/FA <E-B>

U-EE029 Real Arghool Tund <E-E'>

U-EE030 A.OUD PHRASES C2-G#2

U-EE031 OUD PHRASES C2-C#3

U-EE032 A.KANUN PHRASES C2-F2

U-EE033 A.BUZUQ PHRASES C2-G3

U-EE034 A.VIOLIN PHRASES C2-A#2

U-EE035 NAY PHRASES C2-D5

U-EE036 KAWALA PHRASES C2-C#4

U-EE037 A.BUZUQ IMPROV C2-G#2

U-EE038 GO TO COMBI U-E 000

Combi-UE

U-E000 EXS-170 Maestro Strings1 (STEREO)

SW1 Portamento (default is ON), Expression Pedal (cc11) FadeIn/Out - Small Strings/Large Strings

U-E001 EXS-170 Maestro Strings2 (STEREO)

Expression Pedal (cc11) FadeIn/Out - Strings/Kanun, Nay, Oud

U-E002 EXS-170 Maestro Strings3 (STEREO)

Expression Pedal (cc11) FadeIn/Out - Small Strings/Large Strings

U-E003 A.Oud + Improv C2-B3

Chord Progression C2 to B3; Chord Progression, Karma Scenes 1-8, Memory = Latch On (default Off)

U-E005 A.Kanun + Improv C2-F#3 (STEREO)

Chord Progression C2 to F#3

U-E003 A.Buzuq + Improv C2-C3 (STEREO)

Chord Progression C2 to C3; C#3 Stop Chord Progression

U-E006 Real Mehwiz Drone" F3"

F3 Drone

U-E007 Real Arghool Drone" F3"

F3 Drone