

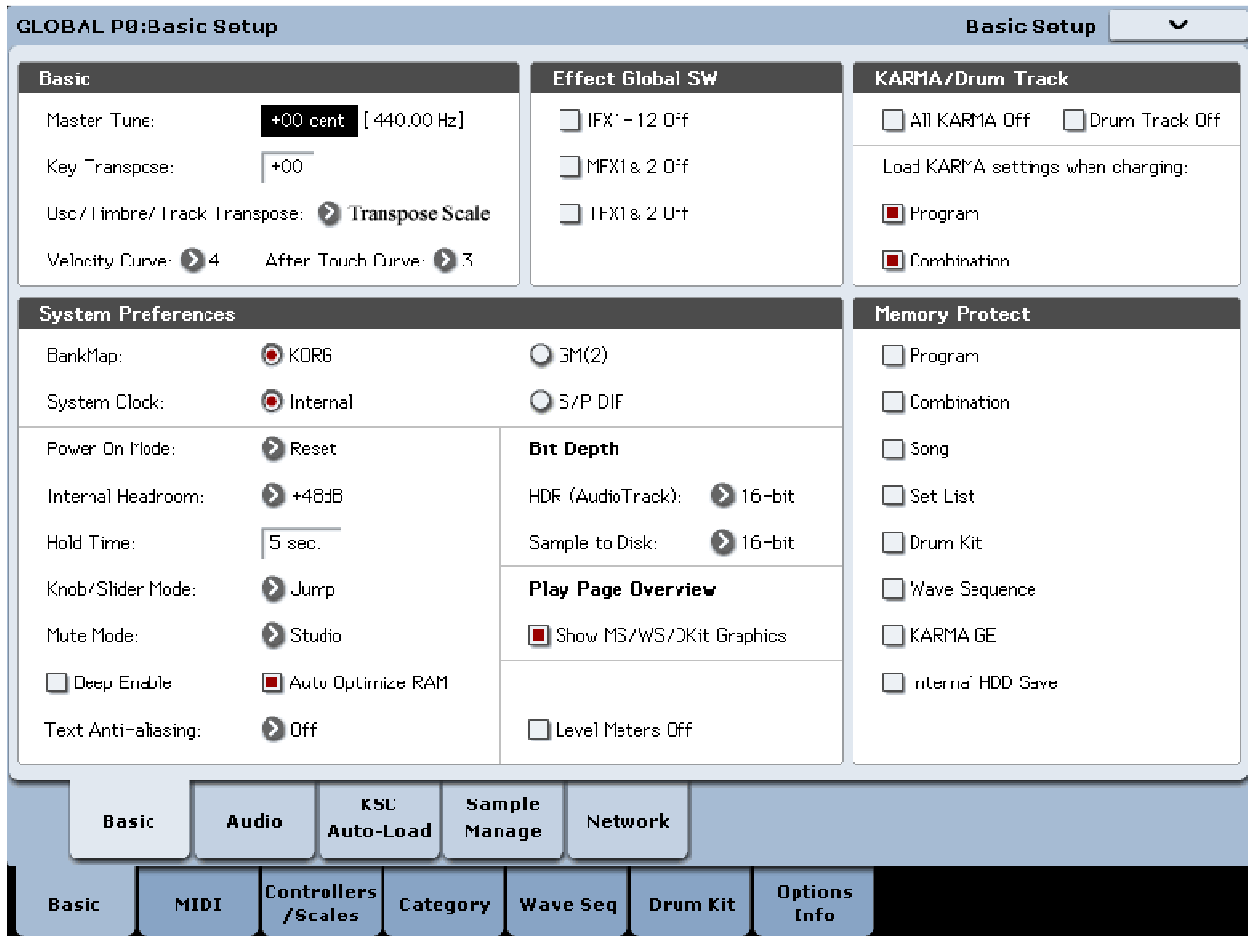
EXs-171 Sha'bi
Voice Name List



Kelfar Technologies
Karim El-Far
7486 Boris Court
Rohnert Park, CA 94928
USA
Phone: (707) 664-9892
Email: info@kelfar.net

Before using the EXs-171 Sha'bi, you have to make sure that Korg Kronos has the following suggested default **Global** setup:

1. Press the button **Global**
2. Press the tab **Basic** on the touch-screen to access the **Global P0: Basic Setup**



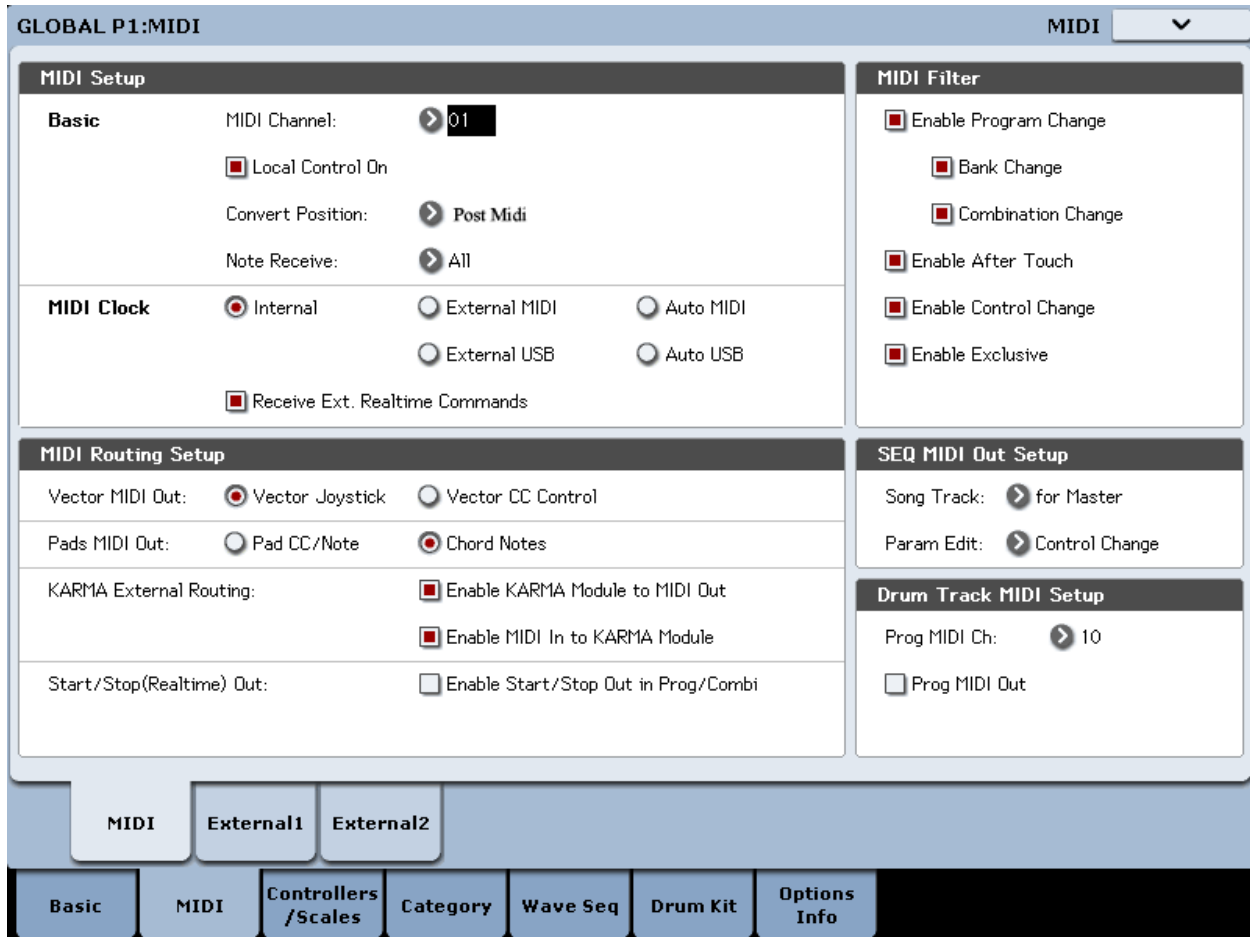
By default the **Osc/Timbre/Track Transpose** is set to "**Works Within Scale**". In order for the EXs-171 Sha'bi sound library to work properly, it is necessary to set the **Osc/Timbre/Track** to "**Transposes Scale**".

Be sure to **Write Global Setting** when modifying the data as follows:

1. Select **Write Global Setting** from the drop-menu, a dialog box will appear.
2. Press **OK** to write the data, or press cancel without writing the data.

You can also use the **SEQUENCER REC/WRITE** switch to write data in the same way as the **Write Global Setting** command.

1. Press the button **Global**
2. Press the tab **Midi** on the touch-screen to access the **GLOBAL P1:MIDI**



By default the **Convert Position** is set to "**Pre Midi**". In order for the EXs-171 Sha'bi sound library to work properly, it is necessary to set the **Convert Position** to "**Post Midi**".

Be sure to **Write Global Setting** when modifying the data as follows:

1. Select **Write Global Setting** from the drop-menu, a dialog box will appear.
2. Press **OK** to write the data, or press cancel without writing the data.

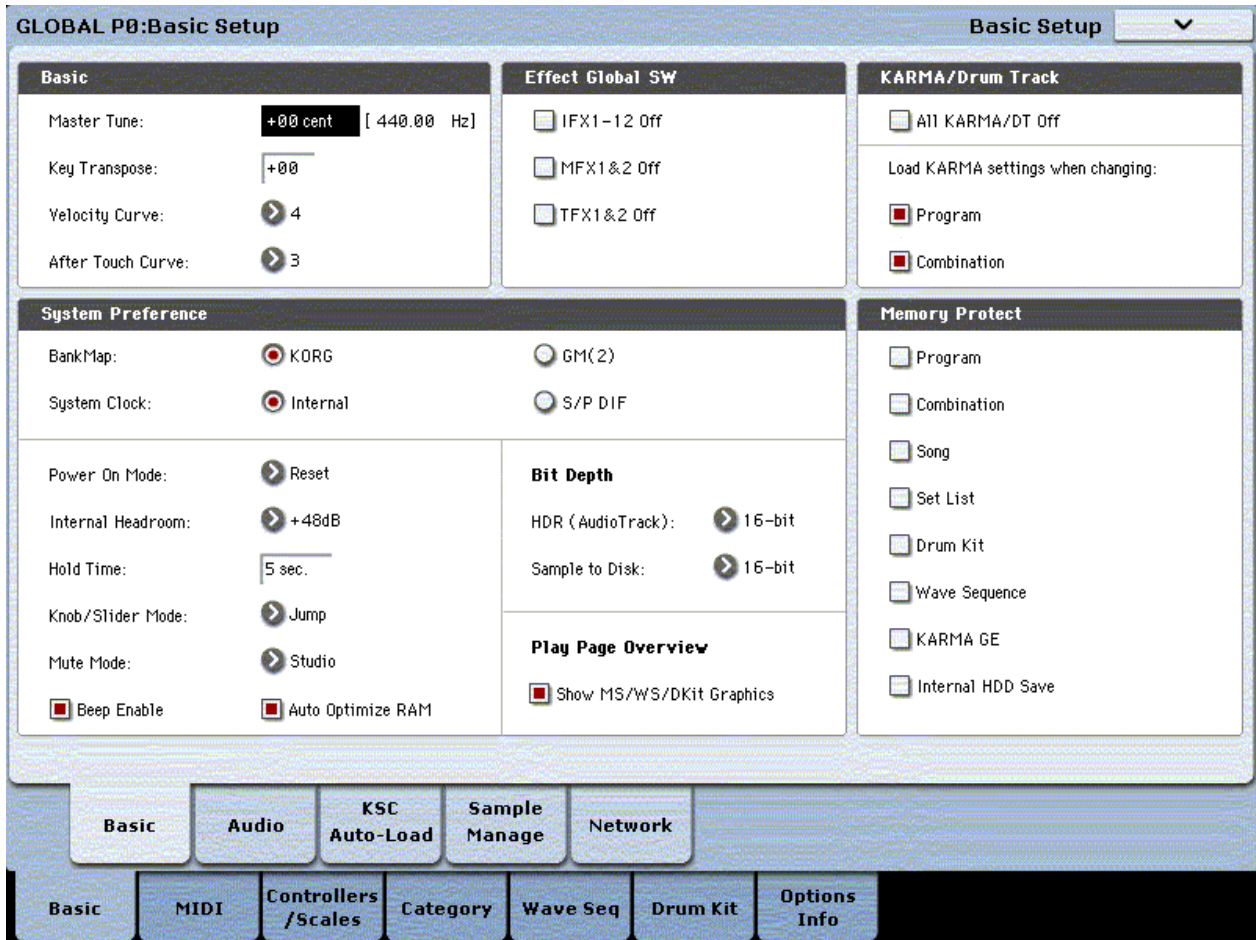
You can also use the **SEQUENCER REC/WRITE** switch to write data in the same way as the **Write Global Setting** command.

We have programmed the EXs 171 Sha'bi to respond to either Velocity or Expression Pedal (CC#11). You may setup the Korg Kronos by using one of the two options:

Option 1: Velocity (Velocity Control)

Before using the EXs 171 Sha'bi, you have to make sure that Korg Kronos has the following suggested default **Global** setup:

1. Press the button **Global**
2. Press the tab **Basic** on the touch-screen to access the **Global P0: Basic Setup**



By default the **Velocity Curve** is adjusted to a standard value of 4 and the **After Touch Curve** is adjusted to a standard value of 3. If not, please adjust them to the recommended values. Be sure to **Write Global Setting** when modifying the data as follows:

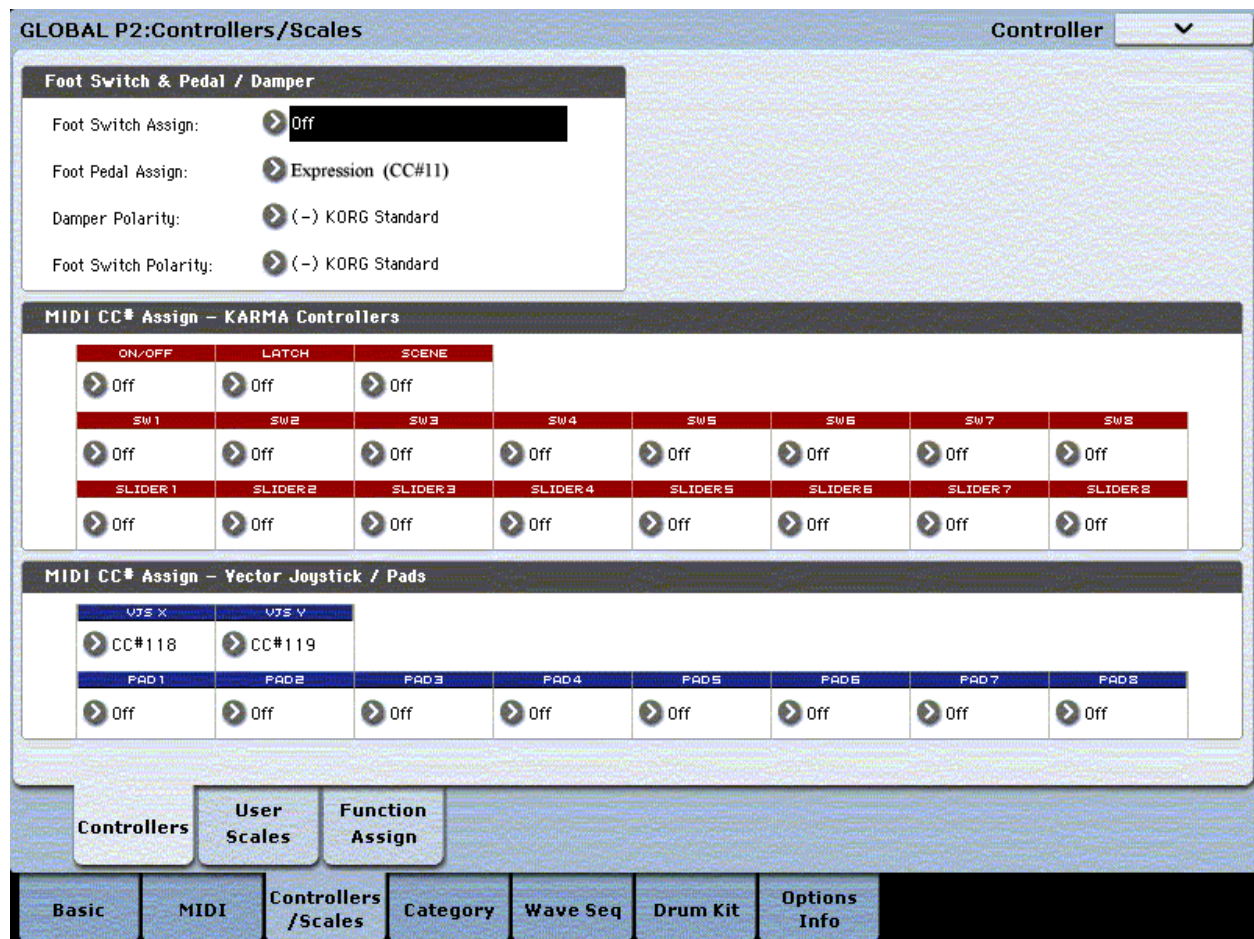
1. Select **Write Global Setting** from the drop-menu, a dialog box will appear.
2. Press **OK** to write the data, or press cancel without writing the data.

You can also use the **SEQUENCER REC/WRITE** switch to write data in the same way as the **Write Global Setting** command.

Option 2: Expression Pedal (Expression CC#11)

If you do not have a Breath Controller or Wind controller, then it is possible to use your own Expression Pedal to control the sound. By using both keyboard and foot pedal techniques, you may be able to get good results as if you are using the Breath Controller or Wind Controller.

1. Press the **Global** button
2. Press the tab **Controllers/Scales** on the touch-screen to access the **Global P2:Controllers/Scales**
3. Press the tab **Controllers**
4. Assign **Expression (CC#11)** to the **Foot Pedal Assign**



Be sure to **Write Global Setting** when modifying the data as follows:

1. Select **Write Global Setting** from the drop-menu, a dialog box will appear.
2. Press **OK** to write the data, or press cancel without writing the data.

You can also use the **SEQUENCER REC/WRITE** switch to write data in the same way as the **Write Global Setting** command.

For your convenience, we have enabled the RT KNOBS/KARMA (LED IS ON) to take control of the sound in realtime. However, check page #6 for more assignable knobs, switches, and programs with Karma GE control.

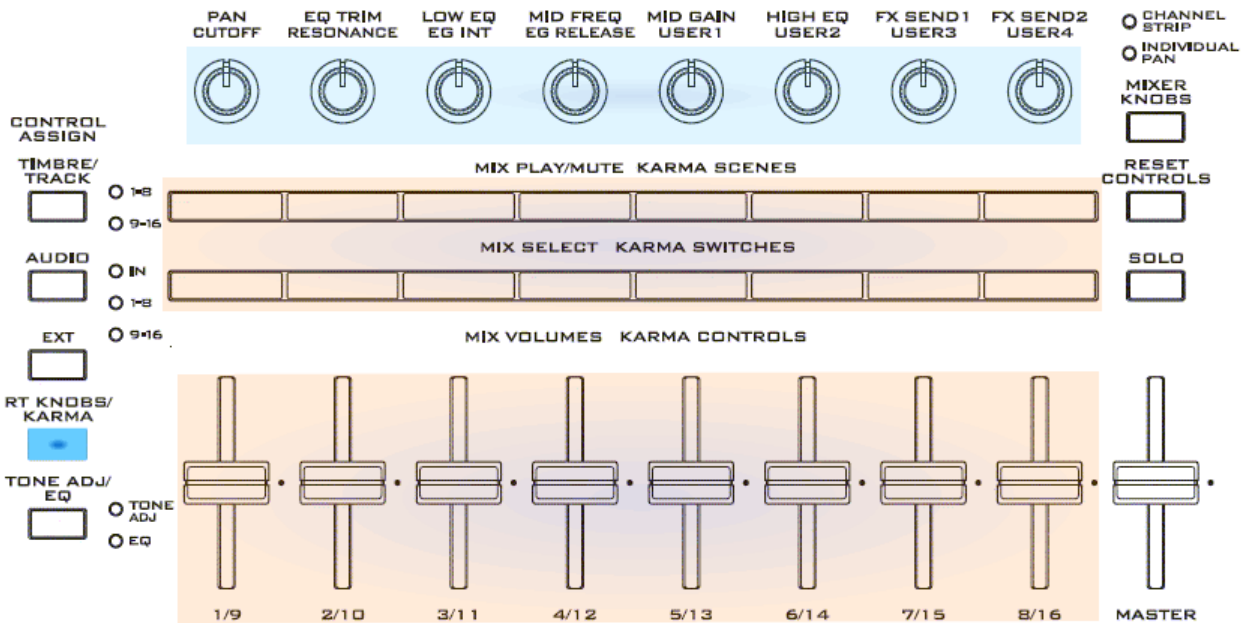
From Korg Kronos Operation Guide:

"The **Realtime Knobs** are a traditional feature of Korg workstations, combining modulation, quick edits, and hands-on control.

"In **RT KNOBS/KARMA** mode, **Knobs 1-4** have dedicated functions, as printed on the front panel: **Filter Cutoff, Filter Resonance, Filter EG Intensity, and Release Time**. All of these correspond to standard MIDI CCs."

Common Realtime Controls: Knobs, Switches, Joystick, Vector Joystick, and Ribbon:

- Knob 7(USER3): MFX1
- Knob 8(USER4): MFX2
- SW1: (Dynamics Control, page 7)
- SW2: (Dynamics Control, page 7)
- JS + Y: (Dynamics Control, page 7)
- JS - Y: (Dynamics Control, page 7)
- Ribbon: (Dynamics Control, page 7)
- VJS +X: (Dynamics Control, page 7)



Voice Name List

[EXs 171 Sha'bi - Korg Kronos v3 Program Bank USER-AA]*

[EXs 171 Sha'bi - Korg Kronos v3 Program Bank USER-BB]*

*Templates > Go to Combi Bank USER-F

[EXs 171 Sha'bi - Korg Kronos v3 Combi Bank USER-F]

0 EXs 171 Zmr 2016 K.MT	32 Mizmar Saeidy	64 Rababa Tri	96 Digital Lead
1 Zmr Live 1	33 Bagpipe J	65 Flute 020 Vel. +7 MT	97 Saw Sha3bi
2 Zmr Live 2	34 Bagpipe Solo	66 Flute 020 +JX +7 Kelfar	98 Lead Kelfar
3 Zmr H	35 Bew Moss 1	67 Shakoli # Vel. +7 MT	99 Lead Guitar+Dist. V3
4 Zmr S	36 Bew Moss 2	68 Shakoli # +JX +7 Kelfar	100 **TQ**
5 Zmr J	37 Bew Moss 3	69 Shakoli # PURE +7 Kelfar	101 Portamento V3
6 Zmr HZ	38 Bew HD 1	70 Kasab Jolany	102 Taqaseem V3
7 Zmr HD 1	39 Bew HD 2	71 Rawan Welda	103 Solo Moss 1
8 Zmr HD 2	40 Bew HD 3	72 Shebbabeh Moss	104 Solo Moss 2
9 Yarghul Mix 1	41 Bew HD 4	73 Shebbabeh %	105 Solo Moss 3
10 Yarghul Mix 2	42 Birds Bew Porta	74 Kasab A	106 King V3
11 Yarghul Mix 3	43 Birds Tweet	75 Kasab B	107 Magic Moss
12 Yarghul Mix 4	44 Jino`Whito Kelfar 2016	76 Kasab J	108 Zurna 5th
13 Yarghul Live	45 Z1* Z1*	77 V3-----	109 Zory Solo
14 Mijwez Fat	46 HERXXRA	78 Nay Zkr	110 Soft Gtr Moss
15 Mijwez Sha3bi	47 XTLOBNI	79 Cawala Moss	111 Jazz Gtr Moss
16 Mijwez AD	48 Violin 5th	80 E7sas Moss	112 Bouzouki Moss
17 Mijwez AK	49 Rababa 5Sabaya	81 Zammara Nay	113 Electric Guitar
18 Mijwez DX1	50 Rababa 5Sabaya 2	82 WAH WAH EX MT	114 Steel Gtr Moss #
19 Mijwez DX2 Moss	51 Rababa-G	83 WAH WAH EXV MT	115 E.Saz Moss 1
20 Mijwez T	52 Rababa 5G	84 WAH WAH TR Kelfar	116 E.Saz Moss 2
21 Mijwez M	53 Rababa V3	85 Lead WAH WAH Kelfar	117 Portamento Guitar
22 Mijwez Z1	54 Rababa K2	86 Soprano Moss	118 GB Gtr
23 Mijwez Y1	55 Rababa Y2	87 Clav Moss	119 Guitar Moss
24 Mijwez Y2	56 Kamanja Moss	88 J.Sha3bi Solo	120 WAH WAH Clav
25 Mijwez V3	57 Rababa #	89 Kojack	121 70's Clav SW1
26 T* &&&&T	58 Rababa ##	90 Sarya	122 Vintage E.Piano
27 Q* &&&&Q	59 Rababa ###	91 Phaser Solo	123 Vintage Violin
28 Mijwez A	60 Rababa Metal	92 Monster Lead	124 Vintage Sax
29 Mijwez B	61 Rababa Trinity	93 MonoDigi	125 Vintage Organ
30 Mij Solo	62 Rababa Z1	94 MonoLead/T3	126 Dynamic VSax 2016 Kelfar
31 Mizmar Baladi	63 Rababa D	95 Digital 1	127 EXs 171 Moss Orchestra

AMS (ALTERNATE MODULATION SOURCE)

[EXs 171 Sha'bi - Korg Kronos v3 Combi Bank USER-F]

*Designed, Programmed and Engineered by Mr. Majdi Tamim and Karim El-Far of Kelfar Technologies

0= 0. EXs 171 Zmr 2016 K.MT	Ribbon -12/12, JY+ Detune
1= 1. Zmr Live 1	Ribbon -12/12, JY+ Detune
2= 2. Zmr Live 2	Ribbon -12/12, JY+ Detune
3= 3. Zmr H	Ribbon -12/12, JY+ Detune
4= 4. Zmr S	Ribbon -12/12, JY+ Detune
5= 5. Zmr J	Ribbon -12/12, JY+ Detune
6= 6. Zmr HZ	Ribbon -12/12, JY+ Detune
7= 7. Zmr HD 1	Ribbon -12/12, JY+ Detune
8= 8. Zmr HD 2	Ribbon -12/12, JY+ Detune
9= 9. Yarghul Mix 1	Ribbon -12/12, JY+ Detune
10= 10. Yarghul Mix 2	Ribbon -12/12, JY+ Detune
11= 11. Yarghul Mix 3	Ribbon -12/12, JY+ Detune
12= 12. Yarghul Mix 4	Ribbon -12/12, JY+ Detune
13= 13. Yarghul Live	Ribbon -12/12, JY+ Detune
14= 14. Mijwez Fat	Ribbon -12/12, JY+ Detune
15= 15. Mijwez Sha3bi	Ribbon -12/12, JY+ Detune
16= 16. Mijwez AD	Ribbon -12/12, JY+ Detune
17= 17. Mijwez AK	Ribbon -12/12, JY+ Detune
18= 18. Mijwez DX1	Ribbon -12/12, JY+ Detune
19= 19. Mijwez DX2 Moss	Ribbon -12/12, JY+ Detune
20= 20. Mijwez T	Ribbon -12/12, JY+ Detune
21= 21. Mijwez M	Ribbon -12/12, JY+ Detune
22= 22. Mijwez Z1	Ribbon -12/12, JY+ Detune
23= 23. Mijwez V1	Ribbon -12/12, JY+ Detune
24= 24. Mijwez V2	Ribbon -12/12, JY+ Detune, JX+ 10% Detune
25= 25. Mijwez V3	Ribbon -12/12, JY+ Detune, JX+ 10% Detune
26= 26. T*&&&*T	Ribbon -12/12, JY+ Detune, JX+ 10% Detune
27= 27. Q*&&&*Q	Ribbon -12/12, JY+ Detune, JX+ 10% Detune
28= 28. Mijwez A	Ribbon -12/12, JY+ Detune, JX+ 10% Detune
29= 29. Mijwez B	Ribbon -12/12, JY+ Detune, JX+ 10% Detune
30= 30. Mij Solo	Ribbon -12/12, JY+ Detune, JX+ 10% Detune
31= 31. Mizmar Baladi	Ribbon -12/12, JY+ Detune
32= 32. Mizmar Saeidy	Ribbon -12/12, JY+ Detune, JX+ 10% Detune
33= 33. Bagpipe J	Bagpipe group "A4"
34= 34. Bagpipe Solo	
35= 35. Bew Moss 1	Ribbon -12/12
36= 36. Bew Moss 2	Ribbon -12/12
37= 37. Bew Moss 3	Ribbon -12/12
38= 38. Bew HD 1	Ribbon -12/12
39= 39. Bew HD 2	Ribbon -12/12
40= 40. Bew HD 3	Ribbon -12/12
41= 41. Bew HD 4	Ribbon -12/12
42= 42. Birds Bew Porta	Ribbon -12/12
43= 43. Birds Tweet	
44= 44. Jino`Wnito Kelfar 2016	SW2 regular sound *FLUTE*
45= 45. Z1* Z1*	
46= 46. HERXXRA	

Kelfar Technologies EXs-171 Sha'bi

47= 47. XTLOBNI	
48= 48. Violin 5th	
49= 49. Rababa 5Sabaya	
50= 50. Rababa 5Sabaya 2	
51= 51. Rababa-G	
52= 52. Rababa 5G	
53= 53. Rababa V3	
54= 54. Rababa K2	
55= 55. Rababa V2	
56= 56. Kamanja Moss	JY- Tremolo
57= 57. Rababa #	JY- Tremolo
58= 58. Rababa ##	JY- Tremolo
59= 59. Rababa ###	JY- Tremolo
60= 60. Rababa Metal	JY- Tremolo
61= 61. Rababa Trinity	
62= 62. Rababa Z1	
63= 63. Rababa D	
64= 64. Rababa Tri	
65= 65. Flute 020 Vel. +7 MT	Velocity +7, JY+ Flutter
66= 66. Flute 020 +JX +7 Kelfar	JX+ +7, JY+ Flutter
67= 67. Shakoli # Vel. +7 MT	Velocity +7, JY+ Flutter
68= 68. Shakoli # +JX +7 Kelfar	JX+ +7, JY+ Flutter
69= 69. Shakoli # PURE +7 Kelfar	JY+ Flutter
70= 70. Kasab Jolany	JY+ Flutter
71= 71. Rawan Welda	JY+ Flutter
72= 72. Shebbabeh Moss	
73= 73. Shebbabeh %	JY+ Flutter
74= 74. Kasab A	
75= 75. Kasab B	JY+ Flutter
76= 76. Kasab J	JY+ Flutter
77= 77. V3----	
78= 78. Nay Zkr	JY+ Flutter
79= 79. Cawala Moss	JY+ Flutter
80= 80. E7sas Moss	
81= 81. Zammara Nay	
82= 82. WAH WAH EX MT	Velocity, JX+
83= 83. WAH WAH EXV MT	Velocity, JX+
84= 84. WAH WAH TR Kelfar	Velocity, JX+
85= 85. Lead WAH WAH Kelfar	Auto WahWah, After Touch, JY+
86= 86. Soprano Moss	
87= 87. Clav Moss	
88= 88. J.Sha3bi Solo	
89= 89. Kojack	
90= 90. Sarya	
91= 91. Phaser Solo	JY- LFO
92= 92. Monster Lead	JY- WAH WAH
93= 93. MonoDigi	
94= 94. MonoLead/T3	
95= 95. Digital 1	
96= 96. Digital Lead	
97= 97. Saw Sha3bi	
98= 98. Lead Kelfar	

Kelfar Technologies EXs-171 Sha'bi

99= 99. Lead Guitar+Dist. V3	JY- Harmonics, Ribbon "pitch", Velocity Noise
100=100. **TQ**	
101=101. Portamento V3	
102=102. Taqaseem V3	
103=103. Solo Moss 1	
104=104. Solo Moss 2	
105=105. Solo Moss 3	
106=106. King V3	
107=107. Magic Moss	
108=108. Zurna 5th	
109=109. Zory Solo	
110=110. Soft Gtr Moss	JY- Mute
111=111. Jazz Gtr Moss	JY- Mute
112=112. Bouzouki Moss	JY- Mute
113=113. Electric Guitar	JY- Mute
114=114. Steel Gtr Moss #	JY- Mute
115=115. E.Saz Moss 1	JY- Mute
116=116. E.Saz Moss 2	JY- Mute
117=117. Portamento Guitar	
118=118. GB Gtr	
119=119. Guitar Moss	JY- Mute
120=120. WAH WAH Clav	
121=121. 70's Clav SW1	
122=122. Vintage E.Piano	
123=123. Vintage Violin	
124=124. Vintage Sax	
125=125. Vintage Organ	Drawbars (Sliders 1-8), Karma On = Rotary Speaker
126=126. Dynamic VSax 2016 Kelfar	
127=127. EXs 171 Moss Orchestra	Velocity Brass