

EXs-172 & 173 Kithara
Voice Name List



Kelfar Technologies
Karim El-Far
7486 Boris Court
Rohnert Park, CA 94928
USA
Phone: (707) 664-9892
Email: info@kelfar.net

THE WORLD'S MOST AUTHENTIC VINTAGE ELECTRIC GUITARS FOR KORG KRONOS

EXs 172 & 173 Kithara for Korg Kronos

Contents: Approximately 3.3 GB of PCM samples, 208 Multisamples, 128 Programs [U-FF], 32 Combis [U-D], 72 Wave Sequences [U-BB(32),UCC(32),UDD(08)]

EXs 172 & 173 Kithara for Korg Kronos faithfully reproduces vintage electric guitars from 1962 - 1980, mapping each nuance, note, and variance for clean articulations and expressive dynamics. EXs 172 has Clean and Jazz sounds. EXs 173 offers Jazz and Distortion Guitars. Combine both Kithara for Korg Kronos for a complete, authentic library of electric guitar sounds.

Kelfar Technologies recorded each vintage instrument separately and used original, period-specific amps, mics, and distortion pedals to reproduce each classic tone. Dynamics, velocities, switching, and round robin/wave sequencing per program and sound add to its authenticity. Each instrument sounds and behaves exactly as it should - but all through your Korg Kronos keyboard!

Special Touches Musicians Will Love

The Kithara Library for Korg Kronos offers much to explore and enjoy in one package.

- Full control over each element of the guitar tone, reverb, delay/chorus (See page 5 for details.)
- Full control of the dynamics when an Expression Pedal is connected.
- Vintage dynamic volume and louder than Korg factory presets!
- Voicing split into two categories - Programs can be used for studio and live applications, and the Combinations Mode can be programmed for live performances using unique options and dynamics incorporated into each Combi.
- Combi allows you to use the 4 Karma Scenes to seamlessly select algorithms and switch between Bridge and Neck pickups as well as Room and Close Mics for ambiance (see the Manual/Guide for details.)

Kithara Library for Korg Kronos: What's Inside

- Four algorithms with mapping that translates into guitar frets and positioning within Kronos
- Bridge and neck pickups
- Large-diaphragm tube condenser room mic and dynamic close mic sound for each guitar
- Upward and downward picking strokes
- Slide up and down
- Pick noises for a truly realistic touch
- Harmonics
- Guitar FX
- Real-time bending

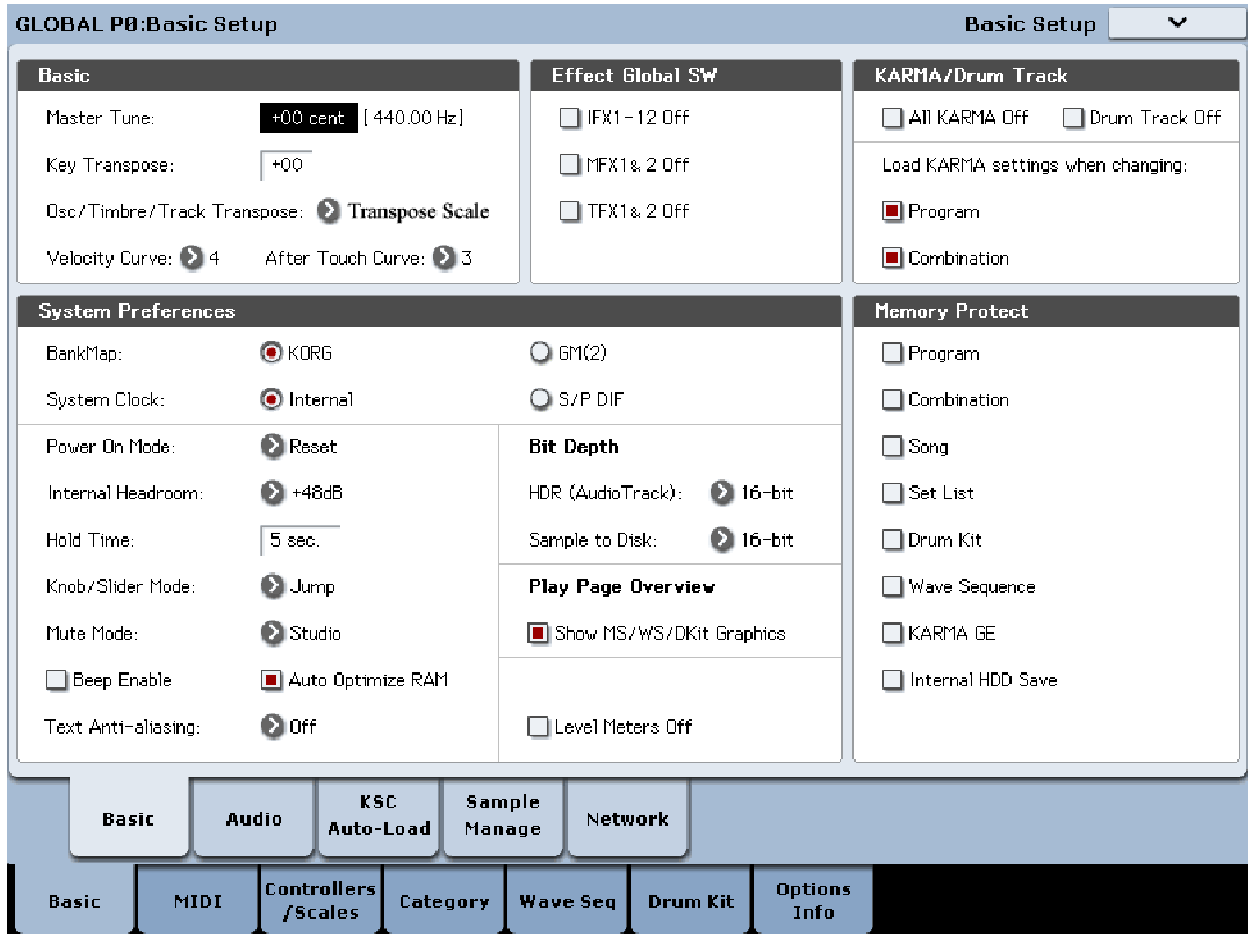
Kelfar Technologies EXs-172 & 173 Kithara

- Bending on a new note at Note-On-Only
- Smooth transitions between two notes or more with poly-legato for distortion guitar

The Kelfar Kithara sound library was recorded by Chris Vibberts of The Rabbit Hole Recording in Petaluma, California. With his expertise in vintage guitars, Chris used state-of-the-art sound equipment to capture a true-to-life representation of these highly sought after classic instruments.

Before using the EXs - 172 & 173 Kithara, please be sure that your Korg Kronos has the following suggested default **Global** setup:

1. Press the button **Global**
2. Press the tab **Basic** on the touch-screen to access the **Global P0: Basic Setup**



By default, the **Osc/Timbre/Track Transpose** is set to "Works Within Scale". In order for the EXs - 172 & 173 Kithara sound library to work properly, it is necessary to set the **Osc/Timbre/Track** to "Transposes Scale", **All KARMA Off** box is unchecked, and **Load KARMA settings when changing** both boxes are checked.

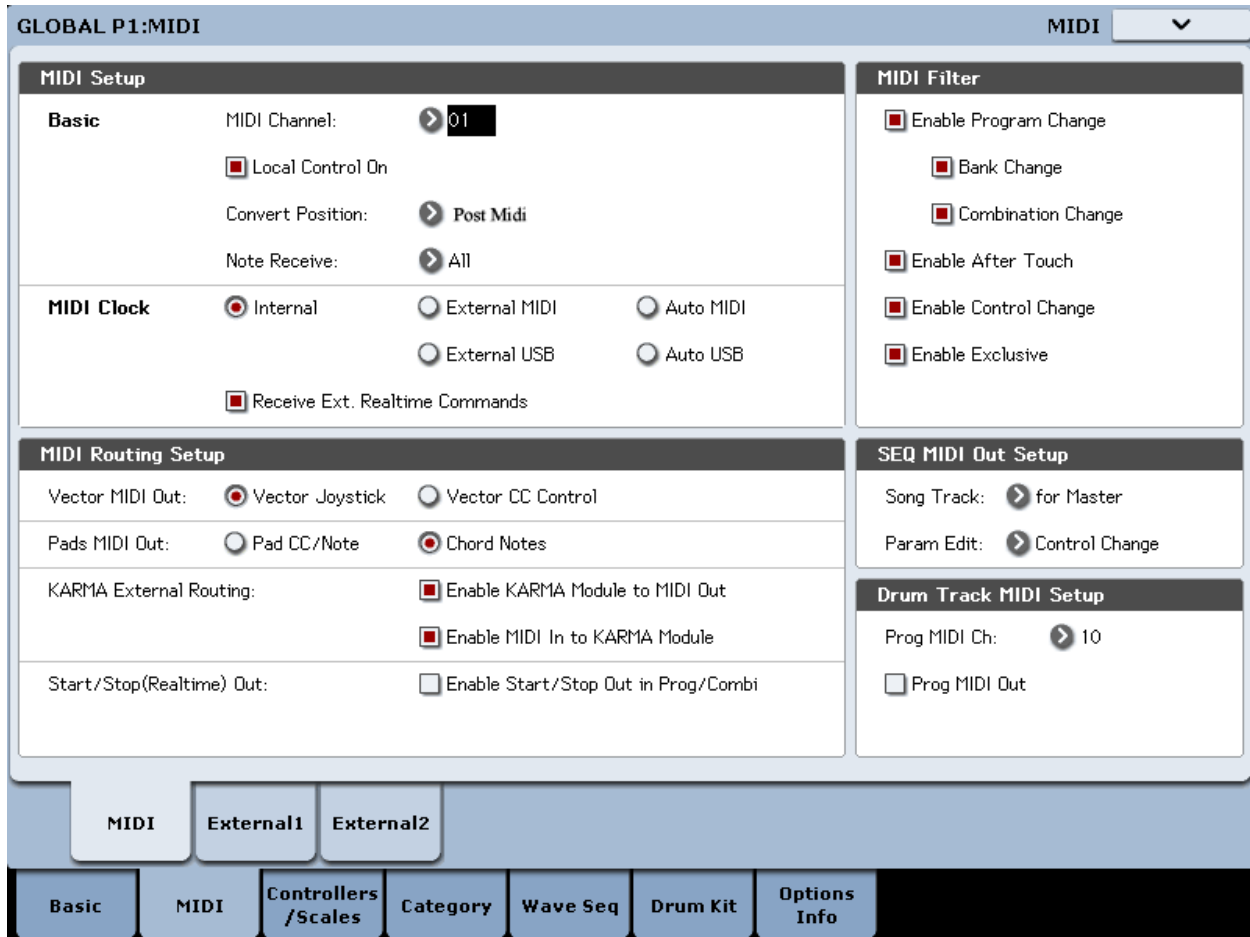
*The Dynamics Control has been programmed with the **Velocity Curve 4** and **After Touch Curve 3**.

Be sure to **Write Global Setting** when modifying the data as follows:

1. Select **Write Global Setting** from the drop-menu, a dialog box will appear.
2. Press **OK** to write the data, or press **Cancel** without writing the data.

You can also use the **SEQUENCER REC/WRITE** switch to write data in the same way as the **Write Global Setting** command.

1. Press the button **Global**
2. Press the tab **MIDI** on the touch-screen to access the **GLOBAL P1:MIDI**



By default, the **Convert Position** is set to "Pre Midi". In order for the EXs - 172 & 173 Kithara sound library to work properly, it is necessary to set the **Convert Position** to "Post Midi".

Be sure to **Write Global Setting** when modifying the data as follows:

1. Select **Write Global Setting** from the drop-menu, a dialog box will appear.
2. Press **OK** to write the data, or press **Cancel** without writing the data.

You can also use the **SEQUENCER REC/WRITE** switch to write data in the same way as the **Write Global Setting** command.

For your convenience, we have enabled the **RT KNOBS/KARMA (LED IS ON)** to take control of the sound in real-time.

From Korg Kronos Operation Guide:

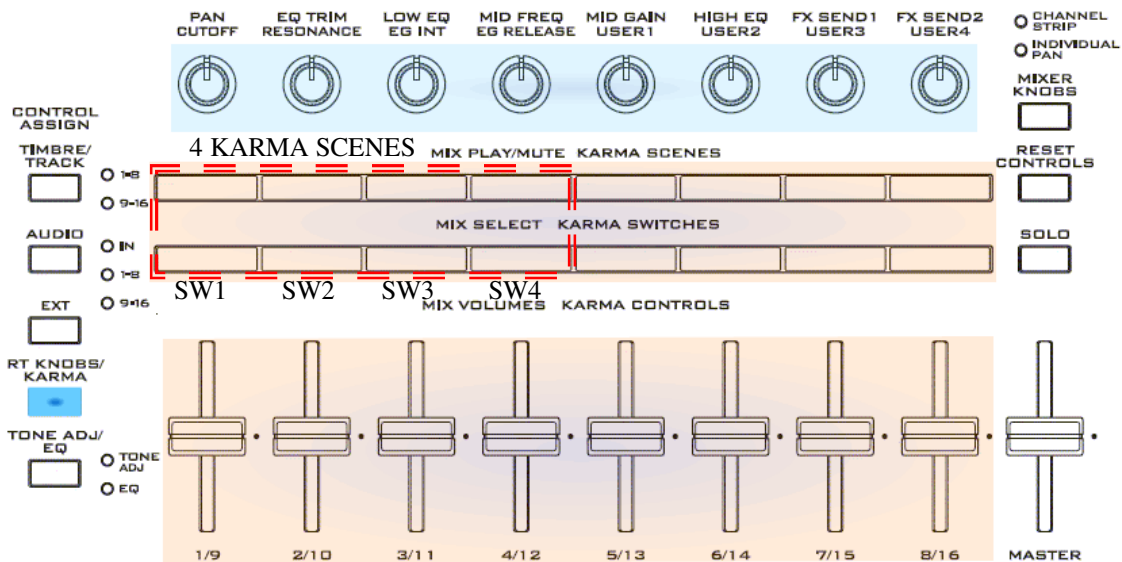
"The **Realtime Knobs** are a traditional feature of Korg workstations, combining modulation, quick edits, and hands-on control.

"In **RT KNOBS/KARMA** mode, **Knobs 1-4** have dedicated functions, as printed on the front panel: **Filter Cutoff, Filter Resonance, Filter EG Intensity, and Release Time**. All of these correspond to standard MIDI CCs."

Common Realtime Controls: Knobs, Switches, Joystick, Vector Joystick, Ribbon, Velocity, AfterTouch, Karma Scenes:

Knob 5(USER1):	Vibrato Control - Active when SW1:On
Knob 6(USER2):	Tone Control - Controls the brightness/darkness
Knob 7(USER3):	MFX1 - Chorus (Program), Delay (Combi)
Knob 8(USER4):	MFX2 - Reverb
SW1:	(Dynamics Control, Vibrato On, default: SW1:Off)
SW2:	(Dynamics Control, Slide-Bending = Velocity/112, default: SW1:On)
JS + Y:	(Dynamics Control, WahWah)
JS - Y:	(Dynamics Control, String Mute)
JX*	(Dynamics Control, Bending on a new note at Note-On-Only) *Clean Guitars= PB range = 2, Distortion Guitars, PB range = 12)
Ribbon:	(Dynamics Control, Bending, Range=12 semitones)
VJS -/+ X:	(Dynamics Control, Pick Noise)
VJS -/+ Y:*	(Dynamics Control, atmospheric effect when +Y @ maximum value) *Works only in Combi
Key Zones:	E2-C#6
After Touch:	Pitch Bending and Vibrato
Velocity:	Slides/Bends when SW2:On and Velocity value = 112
Velocity:	Eight velocity zones
Round Robin/WS:	Upward and downward picking strokes
Harmonics:	Harmonics can be triggered if the Velocity value = 127 <i>In order for the Harmonics to be triggered, you will need to connect the nanoPad/2 or a midi controller that can send fixed Velocity of 127</i> <i>Or in Program mode, you can use the 6 preprogrammed pads to trigger the harmonics directly.</i>
Algorithms:	Four guitar mapping options to select from: ALG1, ALG2, ALG3,ALG4
Pickups:	Neck, bridge, or neck and bridge parallel mix (Abbr. 2PU)
Ambience:	Room and Close (Abbr. R and C)
Karma Scenes:	(In Combi only) Karma Scenes [1-4] to seamlessly select algorithms, pickups, and ambience
Poly Legato:	Smooth transitions between two notes or more with <i>poly legato</i> for distortion guitar

Common Realtime Controls/Karma Scenese & Switches



While playing all the incredible vintage guitars included in this library you have quick control over your tone and effects just like you would while playing an actual guitar through pedals into a tube amplifier. In **Combi** mode only, press one of 8 user programable **Karma Scenes** (first 4 preprogrammed) to instantly select any combination of neck and bridge pickups for each guitar as well as close and room microphones for a wide array of tonal possibilities. **Karma Scenes** can be programmed to utilize any combination of **Karma Switches**, which correspond to guitar pickup and mic position options.

Kick on the vibrato effect with the **SW1** switch and adjust the speed with **Knob 5(USER1)**. **Knob 6(USER2)** acts just like the tone knob on a guitar— roll off the high end for a mellow jazz sound, or turn it up to let those single coils really cut through the mix. With **Knob 7(USER3)** & **Knob 8(USER4)** you have instant control of chorus, delay, and reverb. Especially cool is the joystick (**JS + Y**) wah-wah effect. Use this to create wide tonal sweeps or fully get your 70’s funk on!

Besides the fact that each sample in this set has captured the full richness of all our guitar tones—from pick to string to pickup to analog pedals to tube amps— what really enables this library to sound realistic is the ability to emulate finger vibrato with **Velocity** and **AfterTouch**. From soft, sweet vibrato, to whole step bends, the ability to shape sound like you are playing an actual guitar is literally at your fingertips. To further customize your sound, explore the pitch bending possibilities with the **Ribbon** control. From gentle tremolo arm dips to full octave whammy dives, this guitar library is a blast to play!

What may be most important of all is our revolutionary **Algorithms** that allow you to play in the right position on the neck, on the right strings, at the right time so you sound like a real guitarist... not someone playing 22 notes all on the same string! We’ve mapped every note correctly, true to a real fretboard. While using the distortion sounds, experience the **Poly Legato** feature which allows you to play consecutive notes without pick attack for realistic hammer-on and pull-off slurs. Don’t forget that each sample has been recorded with up and down strokes, and you have a full library of muted notes, harmonics, pick noise, and slides for the most dynamic and realistic playable vintage electric guitar library that the world has ever seen!

Voice Name List

Programs-U-FF

EXs - 172 Clean & Jazz

U-FF000 CLEAN NECK R-ALG1
U-FF001 CLEAN NECK R-ALG2
U-FF002 CLEAN NECK R-ALG3
U-FF003 CLEAN NECK R-ALG4
U-FF004 CLEAN NECK C-ALG1
U-FF005 CLEAN NECK C-ALG2
U-FF006 CLEAN NECK C-ALG3
U-FF007 CLEAN NECK C-ALG4
U-FF008 CLEAN BRDG R-ALG1
U-FF009 CLEAN BRDG R-ALG2
U-FF010 CLEAN BRDG R-ALG3
U-FF011 CLEAN BRDG R-ALG4
U-FF012 CLEAN BRDG C-ALG1
U-FF013 CLEAN BRDG C-ALG2
U-FF014 CLEAN BRDG C-ALG3
U-FF015 CLEAN BRDG C-ALG4
U-FF016 CLEAN 2PU R-ALG1
U-FF017 CLEAN 2PU R-ALG2
U-FF018 CLEAN 2PU R-ALG3
U-FF019 CLEAN 2PU R-ALG4
U-FF020 CLEAN 2PU C-ALG1
U-FF021 CLEAN 2PU C-ALG2
U-FF022 CLEAN 2PU C-ALG3
U-FF023 CLEAN 2PU C-ALG4
U-FF024 CLEAN 2PUVB R-ALG1
U-FF025 CLEAN 2PUVB R-ALG2
U-FF026 CLEAN 2PUVB R-ALG3
U-FF027 CLEAN 2PUVB R-ALG4
U-FF028 CLEAN 2PUVB C-ALG1
U-FF029 CLEAN 2PUVB C-ALG2
U-FF030 CLEAN 2PUVB C-ALG3
U-FF031 CLEAN 2PUVB C-ALG4

Key Range: E3-C#6

U-FF032 CLEAN BD R-ALG1 SLIDE DN
U-FF033 CLEAN BD R-ALG2 SLIDE DN
U-FF034 CLEAN BD R-ALG3 SLIDE DN
U-FF035 CLEAN BD C-ALG1 SLIDE DN
U-FF036 CLEAN BD C-ALG2 SLIDE DN
U-FF037 CLEAN BD C-ALG3 SLIDE DN

Key Range: E2-C#5

U-FF038 CLEAN BD R-ALG1 SLIDE UP
U-FF039 CLEAN BD R-ALG2 SLIDE UP
U-FF040 CLEAN BD R-ALG3 SLIDE UP
U-FF041 CLEAN BD C-ALG1 SLIDE UP
U-FF042 CLEAN BD C-ALG2 SLIDE UP
U-FF043 CLEAN BD C-ALG3 SLIDE UP

Kelfar Technologies EXs-172 & 173 Kithara

U-FF044 FUNK 2PU R-ALG1 PICK
U-FF045 FUNK 2PU R-ALG2 PICK
U-FF046 FUNK 2PU R-ALG3 PICK
U-FF047 FUNK 2PU R-ALG4 PICK
U-FF048 FUNK 2PU C-ALG1 PICK
U-FF049 FUNK 2PU C-ALG2 PICK
U-FF050 FUNK 2PU C-ALG3 PICK
U-FF051 FUNK 2PU C-ALG4 PICK
U-FF052 JAZZ_GZ NECK R-ALG1
U-FF053 JAZZ_GZ NECK R-ALG2
U-FF054 JAZZ_GZ NECK R-ALG3
U-FF055 JAZZ_GZ NECK R-ALG4
U-FF056 JAZZ_GZ NECK C-ALG1
U-FF057 JAZZ_GZ NECK C-ALG2
U-FF058 JAZZ_GZ NECK C-ALG3
U-FF059 JAZZ_GZ NECK C-ALG4
U-FF060 JAZZ_GZ BRDG R-ALG1
U-FF061 JAZZ_GZ BRDG R-ALG2
U-FF062 JAZZ_GZ BRDG R-ALG3
U-FF063 JAZZ_GZ BRDG R-ALG4
U-FF064 JAZZ_GZ BRDG C-ALG1
U-FF065 JAZZ_GZ BRDG C-ALG2
U-FF066 JAZZ_GZ BRDG C-ALG3
U-FF067 JAZZ_GZ BRDG C-ALG4

EXs - 173 Jazz & Distortion

U-FF068 JAZZ_GB NECK R-ALG1
U-FF069 JAZZ_GB NECK R-ALG2
U-FF070 JAZZ_GB NECK R-ALG3
U-FF071 JAZZ_GB NECK R-ALG4
U-FF072 JAZZ_GB NECK C-ALG1
U-FF073 JAZZ_GB NECK C-ALG2
U-FF074 JAZZ_GB NECK C-ALG3
U-FF075 JAZZ_GB NECK C-ALG4
U-FF076 JAZZ_GB BRDG R-ALG1
U-FF077 JAZZ_GB BRDG R-ALG2
U-FF078 JAZZ_GB BRDG R-ALG3
U-FF079 JAZZ_GB BRDG R-ALG4
U-FF080 JAZZ_GB BRDG C-ALG1
U-FF081 JAZZ_GB BRDG C-ALG2
U-FF082 JAZZ_GB BRDG C-ALG3
U-FF083 JAZZ_GB BRDG C-ALG4
U-FF084 DISTORTION_GB R-ALG1
U-FF085 DISTORTION_GB R-ALG2
U-FF086 DISTORTION_GB R-ALG3
U-FF087 DISTORTION_GB R-ALG4
U-FF088 DISTORTION_GB C-ALG1
U-FF089 DISTORTION_GB C-ALG2
U-FF090 DISTORTION_GB C-ALG3
U-FF091 DISTORTION_GB C-ALG4
U-FF092 DISTORT_MUTE GB R-ALG1

Kelfar Technologies EXs-172 & 173 Kithara

U-FF093 DISTORT_MUTE GB R-ALG2
U-FF094 DISTORT_MUTE GB R-ALG3
U-FF095 DISTORT_MUTE GB R-ALG4
U-FF096 DISTORT_MUTE GB C-ALG1
U-FF097 DISTORT_MUTE GB C-ALG2
U-FF098 DISTORT_MUTE GB C-ALG3
U-FF099 DISTORT_MUTE GB C-ALG4
U-FF100 POWER CHORDS R-ALG1
U-FF101 POWER CHORDS R-ALG2
U-FF102 POWER CHORDS R-ALG3
U-FF103 POWER CHORDS R-ALG4
U-FF104 POWER CHORDS R-ALG5
U-FF105 POWER CHORDS C-ALG1
U-FF106 POWER CHORDS C-ALG2
U-FF107 POWER CHORDS C-ALG3
U-FF108 POWER CHORDS C-ALG4
U-FF109 POWER CHORDS C-ALG5
U-FF110 DIST_SLIDE UP/DN R- JS-Y
U-FF111 DIST_SLIDE UP/DN C- JS-Y
U-FF112 DIST_SLIDE_H UPDN R JS-Y
U-FF113 DIST_SLIDE_H UPDN C JS-Y
U-FF114 DIST_STRING NOISE R
U-FF115 DIST_STRING NOISE C
U-FF116 DIST_HARMONICS R
U-FF117 DIST_HARMONICS C
U-FF118 DIST_FX R
U-FF119 DIST_FX C
U-FF120 STRING NOISE 2PU R
U-FF121 STRING NOISE 2PU C
U-FF122 STRUM NOISE 1&2 2PUR -Y
U-FF123 STRUM NOISE 1&2 2PUC -Y
U-FF124 STRUM NOISE 3&4 2PUR -Y
U-FF125 STRUM NOISE 3&4 2PUC -Y
U-FF126 HARMONICS 2PU R
U-FF127 HARMONICS 2PU C

Combi U-D

U-D000 Clean R,C Neck/Bridge 1
U-D001 Clean R,C Neck/Bridge 2
U-D002 Clean R,C Neck/Bridge 3
U-D003 Clean R,C Neck/Bridge 4
U-D004 Clean R,C 2PU 1
U-D005 Clean R,C 2PU 2
U-D006 Clean R,C 2PU Vibrato 1
U-D007 Clean R,C 2PU Vibrato 2
U-D008 Clean R,C Brd.Slide Dn 1
U-D009 Clean R,C Brd.Slide Dn 2
U-D010 Clean R,C Brd.Slide Up 1
U-D011 Clean R,C Brd.Slide Up 2
U-D012 Clean R,C 2PU Funk 1

Kelfar Technologies EXs-172 & 173 Kithara

U-D013 Clean R,C 2PU Funk 2
U-D014 JazzGZ R,C Neck/Bridge 1
U-D015 JazzGZ R,C Neck/Bridge 2
U-D016 JazzGZ R,C Neck/Bridge 3
U-D017 JazzGZ R,C Neck/Bridge 4
U-D018 JazzGB R,C Neck/Bridge 1
U-D019 JazzGB R,C Neck/Bridge 2
U-D020 JazzGB R,C Neck/Bridge 3
U-D021 JazzGB R,C Neck/Bridge 4
U-D022 Distortion R,C 1
U-D023 Distortion R,C 2
U-D024 Mute Distortion R,C 1
U-D025 Mute Distortion R,C 2
U-D026 Power Chords R,C 1
U-D027 Power Chords R,C 2
U-D028 Power Chords R,C 3
U-D029 Slide Distortion R,C -Y
U-D030 Harmonics Distortion R,C
U-D031 Harmonics Clean GT R,C

WaveSequences [U-BB, U-CC, U-DD]

U-BB000 FRGTNeck 1 mp DwnUp
U-BB001 FRGTNeck 2 mp DwnUp
U-BB002 FRGTNeck 3 mp DwnUp
U-BB003 FRGTNeck 4 mp DwnUp
U-BB004 FCGTNeck 1 mp DwnUp
U-BB005 FCGTNeck 2 mp DwnUp
U-BB006 FCGTNeck 3 mp DwnUp
U-BB007 FCGTNeck 4 mp DwnUp
U-BB008 FRGTBridge 1 mp DwnUp
U-BB009 FRGTBridge 2 mp DwnUp
U-BB010 FRGTBridge 3 mp DwnUp
U-BB011 FRGTBridge 4 mp DwnUp
U-BB012 FCGTBridge 1 mp DwnUp
U-BB013 FCGTBridge 2 mp DwnUp
U-BB014 FCGTBridge 3 mp DwnUp
U-BB015 FCGTBridge 4 mp DwnUp
U-BB016 FRGT2PU 1 mp DwnUp
U-BB017 FRGT2PU 2 mp DwnUp
U-BB018 FRGT2PU 3 mp DwnUp
U-BB019 FRGT2PU 4 mp DwnUp
U-BB020 FCGT2PU 1 mp DwnUp
U-BB021 FCGT2PU 2 mp DwnUp
U-BB022 FCGT2PU 3 mp DwnUp
U-BB023 FCGT2PU 4 mp DwnUp
U-BB024 GzRGTNeck 1 mp DwnUp
U-BB025 GzRGTNeck 2 mp DwnUp
U-BB026 GzRGTNeck 3 mp DwnUp
U-BB027 GzRGTNeck 4 mp DwnUp
U-BB028 GzCGTNeck 1 mp DwnUp

Kelfar Technologies EXs-172 & 173 Kithara

U-BB029 GzCGTNeck 2 mp DwnUp
U-BB030 GzCGTNeck 3 mp DwnUp
U-BB031 GzCGTNeck 4 mp DwnUp
U-CC000 GzRGTBridge 1 mp DwnUp
U-CC001 GzRGTBridge 2 mp DwnUp
U-CC002 GzRGTBridge 3 mp DwnUp
U-CC003 GzRGTBridge 4 mp DwnUp
U-CC004 GzCGTBridge 1 mp DwnUp
U-CC005 GzCGTBridge 2 mp DwnUp
U-CC006 GzCGTBridge 3 mp DwnUp
U-CC007 GzCGTBridge 4 mp DwnUp
U-CC008 GBRGTNeck 1 mp DwnUp
U-CC009 GBRGTNeck 2 mp DwnUp
U-CC010 GBRGTNeck 3 mp DwnUp
U-CC011 GBRGTNeck 4 mp DwnUp
U-CC012 GBCGTNeck 1 mp DwnUp
U-CC013 GBCGTNeck 2 mp DwnUp
U-CC014 GBCGTNeck 3 mp DwnUp
U-CC015 GBCGTNeck 4 mp DwnUp
U-CC016 GBRGTBridge 1 mp DwnUp
U-CC017 GBRGTBridge 2 mp DwnUp
U-CC018 GBRGTBridge 3 mp DwnUp
U-CC019 GBRGTBridge 4 mp DwnUp
U-CC020 GBCGTBridge 1 mp DwnUp
U-CC021 GBCGTBridge 2 mp DwnUp
U-CC022 GBCGTBridge 3 mp DwnUp
U-CC023 GBCGTBridge 4 mp DwnUp
U-CC024 GBRGT_Dist 1 mp DwnUp
U-CC025 GBRGT_Dist 2 mp DwnUp
U-CC026 GBRGT_Dist 3 mp DwnUp
U-CC027 GBRGT_Dist 4 mp DwnUp
U-CC028 GBCGT_Dist 1 mp DwnUp
U-CC029 GBCGT_Dist 2 mp DwnUp
U-CC030 GBCGT_Dist 3 mp DwnUp
U-CC031 GBCGT_Dist 4 mp DwnUp
U-DD000 GBRGT_Dist Side R-UP/DN
U-DD001 GBRGT_Dist Side C-UP/DN
U-DD002 GBRGT_Dist SideH R-UP/DN
U-DD003 GBRGT_Dist SideH C-UP/DN
U-DD004 STRUM NOISE 1&2 2PU R
U-DD005 STRUM NOISE 1&2 2PU C
U-DD006 STRUM NOISE 3&4 2PU R
U-DD007 STRUM NOISE 3&4 2PU C