

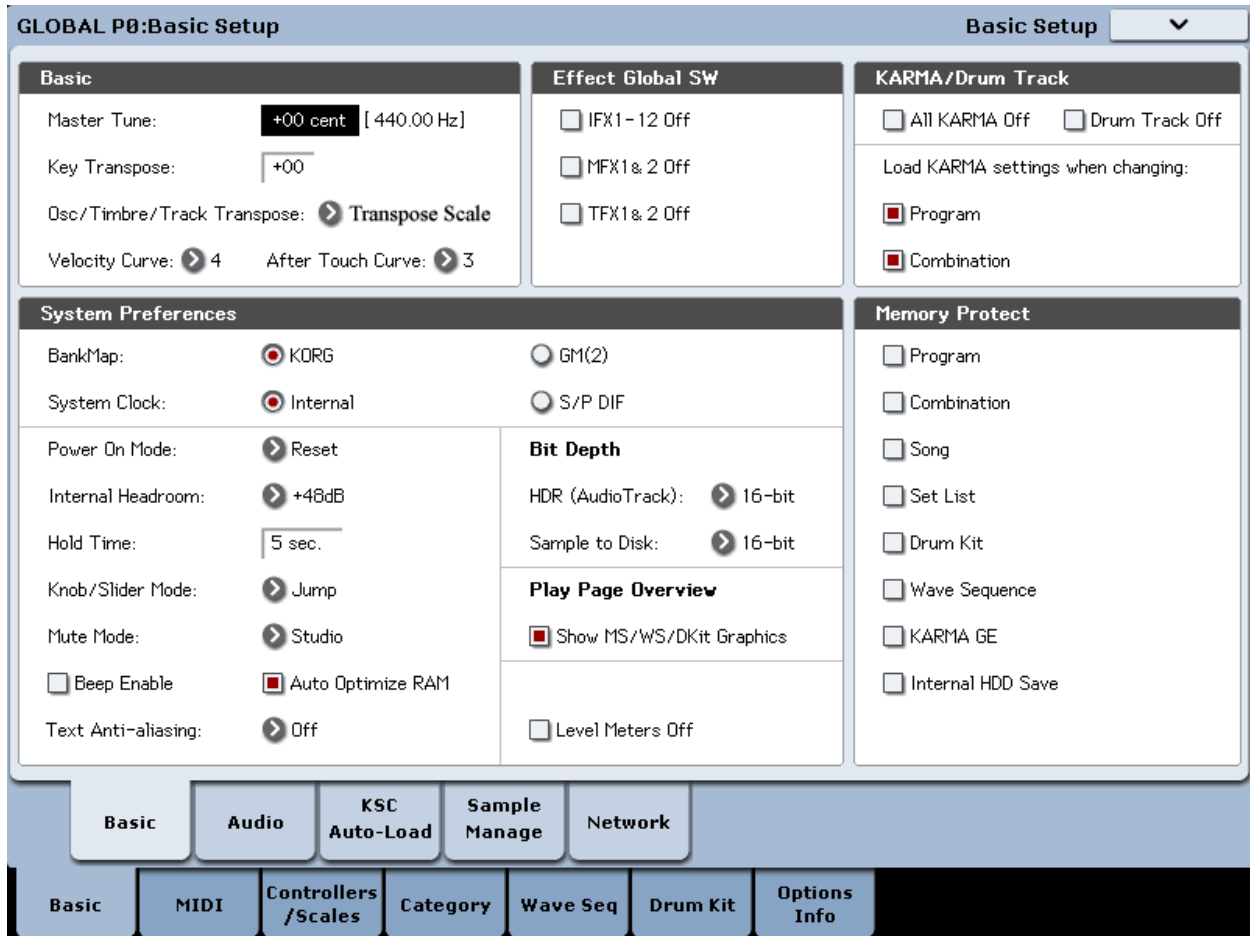
# EXs-186 Vintage Organs and Synths Voice Name List



Kelfar Technologies  
Karim El-Far  
7486 Boris Court  
Rohnert Park, CA 94928  
USA  
Phone: (707) 664-9892  
Email: [info@kelfar.net](mailto:info@kelfar.net)

Before using the EXs-186 Vintage Organs & Synths, you have to make sure that Korg Kronos has the following suggested default **Global** setup:

1. Press the button **Global**
2. Press the tab **Basic** on the touch-screen to access the **Global P0: Basic Setup**



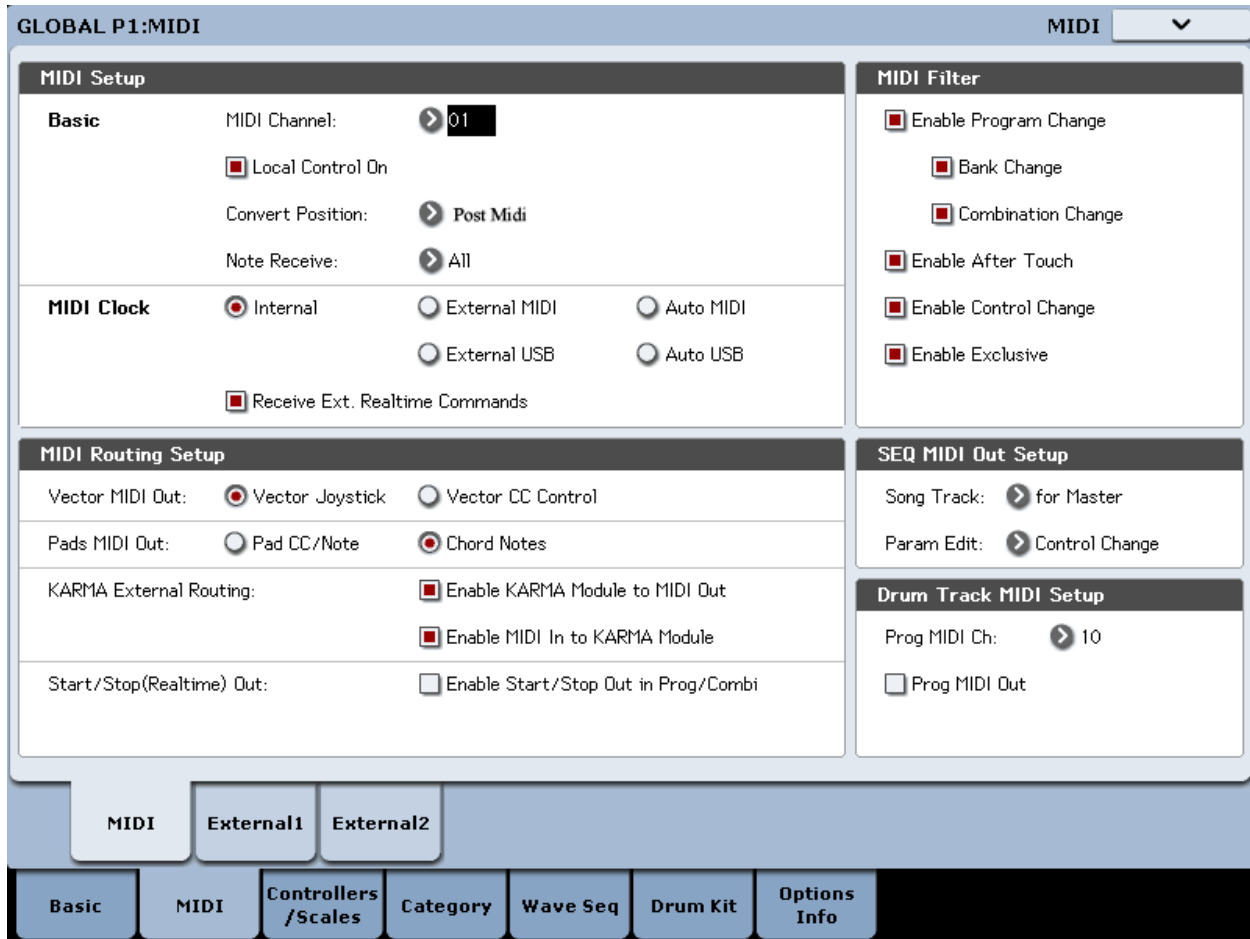
By default the **Osc/Timbre/Track Transpose** is set to "**Works Within Scale**". In order for the EXs-186 Vintage Organs & Synths sound library to work properly, it is necessary to set the **Osc/Timbre/Track** to "**Transposes Scale**".

Be sure to **Write Global Setting** when modifying the data as follows:

1. Select **Write Global Setting** from the drop-menu, a dialog box will appear.
2. Press **OK** to write the data, or press cancel without writing the data.

You can also use the **SEQUENCER REC/WRITE** switch to write data in the same way as the **Write Global Setting** command.

1. Press the button **Global**
2. Press the tab **Midi** on the touch-screen to access the **GLOBAL P1:MIDI**



By default the **Convert Position** is set to "Pre Midi". In order for the EXs-186 Vintage Organs & Synths sound library to work properly, it is necessary to set the **Convert Position** to "Post Midi".

Be sure to **Write Global Setting** when modifying the data as follows:

1. Select **Write Global Setting** from the drop-menu, a dialog box will appear.
2. Press **OK** to write the data, or press cancel without writing the data.

You can also use the **SEQUENCER REC/WRITE** switch to write data in the same way as the **Write Global Setting** command.

For your convenience, we have enabled the **RT KNOBS/KARMA (LED IS ON)** to take control of the sound in realtime. However, check page #6 for more assignable knobs, switches, and programs with Karma GE control.

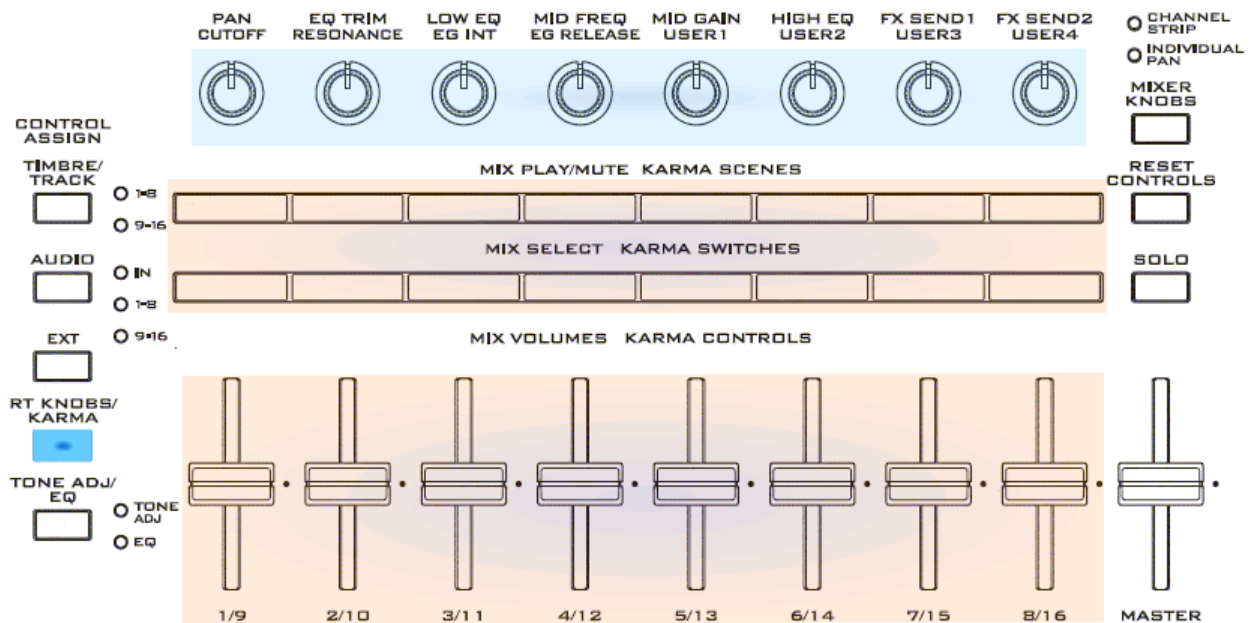
**From Korg Kronos Operation Guide:**

"The **Realtime Knobs** are a traditional feature of Korg workstations, combining modulation, quick edits, and hands-on control.

"In **RT KNOBS/KARMA** mode, **Knobs 1-4** have dedicated functions, as printed on the front panel: **Filter Cutoff**, **Filter Resonance**, **Filter EG Intensity**, and **Release Time**. All of these correspond to standard MIDI CCs."

**Common Realtime Controls: Knobs, Switches, Joystick, Vector Joystick, and Ribbon:**

<b>Knob 1 (CUTOFF)</b>	<b>SW1:</b>	<b>VALUE SLIDER:</b>
<b>Knob 2 (RESONANCE)</b>	<b>SW2:.</b>	<b>AFTER TOUCH</b>
<b>Knob 3 (EG INT)</b>	<b>JS +Y:</b>	<b>VELOCITY</b>
<b>Knob 4 (EG RELEASE)</b>	<b>JS -Y:</b>	
<b>Knob 5 (USER1):</b>	<b>JS -X:</b>	
<b>Knob 6 (USER2):</b>	<b>JS +X:</b>	
<b>Knob 7 (USER3):</b>	<b>MFX1</b>	<b>Ribbon:</b>
<b>Knob 8 (USER4):</b>	<b>MFX2</b>	<b>VJS +X:</b>



## Voice Name List

## Programs - U-CC

No.	NAME	No.	NAME
000	F.Organ 1	032	Vintage Cl.Guitar 1 ALG1
001	F.Organ 2	033	Vintage Cl.Guitar 2 ALG2
002	F.Organ 3	034	Vintage Cl.Guitar 3 ALG1
003	F.Organ 4	035	Vintage Cl.Guitar 4 ALG2
004	F.Organ 5	036	Vintage Distortion Lead
005	Int Organ 1	037	Vintage Organ SpringRev
006	Int Organ 2	038	Vintage Organ WahWah
007	Int Organ 3	039	Vintage Picked Bass
008	Int Piano	040	Vintage Funk
009	Int Piano Octave	041	Vintage ClaviCh. Funk
010	Int Clavi Chord	042	Vintage E.Piano 1
011	Int Cello	043	Vintage E.Piano 2
012	Int Violin	044	Vintage Synth E.Piano
013	Int Violin+Cello	045	Vintage Silver Flute
014	Ens.Vintage Strings	046	Vintage Sweet Sax
015	Int Bass 1	047	Vintage Sweet Trumpet 1
016	Int Bass 2	048	Vintage Sweet Trumpet 2
017	Int Bass 1&2	049	Vintage Brass-Trumpet
018	CRM Cello	050	Vintage Soft Brass
019	CRM Violin	051	Vintage Ens.Brass
020	CRM Bass	052	Vintage Soft Strings
021	M.Sat 1	053	Vintage Large Strings
022	M.Sat 2	054	Vintage Greek Bouzouki
023	M.Sat 3	055	Vintage Evolving Strings
024	M.Sat 4	056	Vintage Evolving N.Choir
025	M.Sat 5	057	Vintage Solo 1 RT Knobs
026	Vintage Sitar/Guitar	058	Vintage Solo 2 RT Knobs
027	Vintage Pluck	059	Vintage Solo 3 RT Knobs
028	Vintage Pluck Wah Wah	060	Vintage Solo 4 RT Knobs
029	Vintage Guitar	061	Vintage Solo 5 RT Knobs
030	Vintage 60's Guitar	062	Vintage Solo 6 RT Knobs
031	Vintage 60's Guitar ChPh	063	Vintage Solo 7 RT Knobs

## Voice Name List

## Combinations - U-B

No.	NAME	No.	NAME
000	Vintage Orchestra 1	032	Vintage Guitar + Organ 8
001	Vintage Orchestra 2	033	Vintage Bass + Piano
002	Vintage Orchestra 3	034	Vintage Bass + PianoOct
003	Vintage Drawbars 1	035	Vintage Bass + ClaviCh.
004	Vintage Drawbars 2	036	Vintage Bass + Cello
005	Vintage Drawbars 3	037	Vintage Bass + Violin
006	Vintage Drawbars 4	038	Vintage Bass + Cello/Vio
007	Vintage Drawbars 5	039	Vintage Bass + EnStrings
008	Vintage Drawbars 6	040	Vintage Bass + OcStrings
009	Vintage Bass +Organ 1	041	Vintage Bass + LgStrings
010	Vintage Bass +Organ 2	042	Vintage Bass + CrmCello
011	Vintage Bass +Organ 3	043	Vintage Bass + CrmViolin
012	Vintage Bass +Organ 4	044	Vintage Bass +Ens.Brass1
013	Vintage Bass +Organ 5	045	Vintage Bass +Ens.Brass2
014	Vintage Bass +Organ 6	046	Vintage Bass + Egypt.Sax
015	Vintage Bass +Organ 7	047	Vintage Bass + Trumpet 1
016	Vintage Bass +Organ 8	048	Vintage Bass + Trumpet 2
017	Vintage Bass + OrgSpRev1	049	Vintage Bass + E.Piano 1
018	Vintage Bass + OrgSpRev2	050	Vintage Bass + E.Piano 2
019	Vintage Bass + OrgSpRev3	051	Vintage Bass + 70'S EP
020	Vintage Bass + OrgSpRev4	052	Vintage Bass + ClaviWah
021	Vintage Bass + OrgSpRev5	053	Vintage Large Pads 1
022	Vintage Bass + OrgSpRev6	054	Vintage Large Pads 2
023	Vintage Bass + OrgSpRev7	055	Vintage Piano / Pads
024	Vintage Bass + OrgSpRev8	056	Vintage E.Piano 1 / Pads
025	Vintage Guitar + Organ 1	057	Vintage E.Piano 2 / Pads
026	Vintage Guitar + Organ 2	058	Vintage Choir / Pads
027	Vintage Guitar + Organ 3	059	Vintage Choir/Str./Pads
028	Vintage Guitar + Organ 4	060	Vintage Bass Band 1
029	Vintage Guitar + Organ 5	061	Vintage Bass Band 2
030	Vintage Guitar + Organ 6	062	Vintage Bass Band 3
031	Vintage Guitar + Organ 7	063	Vintage Bass Band 4

**AMS (Alternate Modulation Source, Realtime Controls)**

**Programs - UCC**

No.	NAME	AMS (Alternate Modulation Source, Realtime Controls)
000	F.Organ 1	SW 1=Oct.Down, SW2 JS Y Ribbon Lock, RT Knob 5 Vibrato Rate, JS -Y Filter Modulation, JS +Y Amp Modulation
001	F.Organ 2	SW 1=Oct.Down, SW2 JS Y Ribbon Lock, RT Knob 5 Vibrato Rate, JS -Y Filter Modulation, JS +Y Amp Modulation
002	F.Organ 3	SW 1=Oct.Down, SW2 JS Y Ribbon Lock, RT Knob 5 Vibrato Rate, JS -Y Filter Modulation, JS +Y Amp Modulation
003	F.Organ 4	SW 1=Oct.Down, SW2 JS Y Ribbon Lock, RT Knob 5 Vibrato Rate, JS -Y Filter Modulation, JS +Y Amp Modulation
004	F.Organ 5	SW 1=Oct.Down, SW2 JS Y Ribbon Lock, RT Knob 5 Vibrato Rate, JS -Y Filter Modulation, JS +Y Amp Modulation
005	Int Organ 1	SW 1=Oct.Down, SW2 JS Y Ribbon Lock, RT Knob 5 Vibrato Rate, JS -Y Filter Modulation, JS +Y Amp Modulation
006	Int Organ 2	SW 1=Oct.Down, SW2 JS Y Ribbon Lock, RT Knob 5 Vibrato Rate, JS -Y Filter Modulation, JS +Y Amp Modulation
007	Int Organ 3	SW 1=Oct.Down, SW2 JS Y Ribbon Lock, RT Knob 5 Vibrato Rate, JS -Y Filter Modulation, JS +Y Amp Modulation
008	Int Piano	SW 1=Oct.Down, SW2 Oct. Up, RT Knob 5 Vibrato Rate
009	Int Piano Octave	SW 1=Oct.Down, SW2 Oct. Up, RT Knob 5 Vibrato Rate
010	Int Clavi Chord	SW 1=Oct.Down, SW2 Oct. Up, RT Knob 5 Vibrato Rate
011	Int Cello	SW 1=Oct.Down, SW2 Oct. Up
012	Int Violin	SW 1=Oct.Down, SW2 Oct. Up
013	Int Violin+Cello	SW 1=Oct.Down, SW2 Oct. Up
014	Ens.Vintage Strings	SW 1=Oct.Down, SW2 Oct. Up
015	Int Bass 1	SW 1=Oct.Down, SW2 Oct. Up, RT Knob 5 Attack EG, JS -Y Mute
016	Int Bass 2	SW 1=Oct.Down, SW2 Oct. Up, RT Knob 5 Attack EG, JS -Y Mute
017	Int Bass 1&2	SW 1=Oct.Down, SW2 Oct. Up, RT Knob 5 Attack EG, JS -Y Mute
018	CRM Cello	SW 1=Oct.Down, SW2 Oct. Up
019	CRM Violin	SW 1=Oct.Down, SW2 Oct. Up
020	CRM Bass	SW 1=Oct.Down, SW2 Oct. Up, RT Knob 5 Attack EG, JS -Y Mute
021	M.Sat 1	SW 1=Oct.Down, SW2 Oct. Up, RT Knob 5 Frequency Speed
022	M.Sat 2	SW 1=Oct.Down, SW2 Oct. Up, RT Knob 5 Frequency Speed
023	M.Sat 3	SW 1=Oct.Down, SW2 Oct. Up, RT Knob 5 Frequency Speed
024	M.Sat 4	SW 1=Oct.Down, SW2 Oct. Up, RT Knob 5 Frequency Speed
025	M.Sat 5	SW 1=Oct.Down, SW2 Oct. Up, RT Knob 5 Frequency Speed
026	Vintage Sitar/Guitar	SW 1=Oct.Down, SW2 Oct. Up, RT Knob 5 Frequency Speed
027	Vintage Pluck	SW 1=Oct.Down, SW2 Oct. Up
028	Vintage Pluck Wah Wah	SW 1=Oct.Down, SW2 Oct. Up, RT Knob 5 Vibrato Rate
029	Vintage Guitar	SW 1=Oct.Down, SW2 Oct. Up, RT Knob 5 Vibrato Rate
030	Vintage 60's Guitar	SW 1= Mod/Vibrato, SW2 Oct. Down, RT Knob 5 Vibrato Rate, Knob 6 Mod. Rate
031	Vintage 60's Guitar ChPh	SW 1= Mod/Vibrato, SW2 Oct. Down, RT Knob 5 Vibrato Rate
032	Vintage Cl.Guitar 1 ALG1	SW 1= Mod/Vibrato, SW2 Mod/ Velocity Slide, Knob 5 Vibrato Rate, JS +Y WahWah, JS -Y Mute, 8 Pads - Phrases
033	Vintage Cl.Guitar 2 ALG2	SW 1= Mod/Vibrato, SW2 Mod/ Velocity Slide, Knob 5 Vibrato Rate, JS +Y WahWah, JS -Y Mute, 8 Pads - Phrases
034	Vintage Cl.Guitar 3 ALG1	SW 1= Mod/Vibrato, SW2 Mod/ Velocity Slide, Knob 5 Vibrato Rate, JS +Y WahWah, JS -Y Mute, 8 Pads - Phrases
035	Vintage Cl.Guitar 4 ALG2	SW 1= Mod/Vibrato, SW2 Mod/ Velocity Slide, Knob 5 Vibrato Rate, JS +Y WahWah, JS -Y Mute, 8 Pads - Phrases

## Kelfar Technologies EXs-186 Vintage Organs & Synths

036	Vintage Distortion Lead	SW 1=Oct.Down, SW2 Oct. Up, JS +Y WahWah, JS -Y Harmonics
037	Vintage Organ SpringRev	SW 1=Oct.Down, SW2 JS Y Ribbon Lock, RT Knob 5 Vibrato Rate, Knob 6 Mod. Rate
038	Vintage Organ WahWah	SW 1=Oct.Down, SW2 Oct. Up, RT Knob 5 Vibrato Rate, VALUE SLIDER = PITCH 12
039	Vintage Picked Bass	SW 1=Oct.Down, SW2 Oct. Up
040	Vintage Funk	SW 1=Oct.Down, SW2 Oct. Up
041	Vintage ClaviCh. Funk	SW 1=Mod., SW2 Oct. Down
042	Vintage E.Piano 1	SW 1=Oct.Down, SW2 Oct. Up
043	Vintage E.Piano 2	SW 1=Oct.Down, SW2 Oct. Up
044	Vintage Synth E.Piano	SW 1=Oct.Down, SW2 Oct. Up
045	Vintage Silver Flute	SW 1=Oct.Down, SW2 JS +Y Ribbon Lock
046	Vintage Sweet Sax	SW 1=Oct.Down, SW2 JS +Y Ribbon Lock
047	Vintage Sweet Trumpet 1	SW 1=Oct.Down, SW2 JS +Y Ribbon Lock, VALUE SLIDER = PITCH 12
048	Vintage Sweet Trumpet 2	SW 1=Oct.Down, SW2 JS +Y Ribbon Lock, VALUE SLIDER = PITCH 12
049	Vintage Brass-Trumpet	SW 1=Oct.Down, SW2 JS +Y Ribbon Lock, VALUE SLIDER = PITCH 12
050	Vintage Soft Brass	SW 1=Oct.Down, SW2 Oct. Up, VALUE SLIDER = PITCH 12
051	Vintage Ens.Brass	SW 1=Oct.Down, SW2 Oct. Up, Knob 5 = Detune, JS +Y = Vibrato, JS -Y = Filter Mod, VALUE SLIDER = PITCH 12
052	Vintage Soft Strings	SW 1=Oct.Down, SW2 Oct. Up
053	Vintage Large Strings	SW 1=Oct.Down, SW2 Oct. Up
054	Vintage Greek Bouzouki	SW 1=Oct.Down, SW2 Oct. Up, Karma Treomolo Velocity 102, JS -Y = Tempo
055	Vintage Evolving Strings	SW 1=Oct.Down, SW2 Oct. Up, Knob 5 = Frequency Speed, Knob 6 = Wet/Dry amount (Frequency Speed)
056	Vintage Evolving N.Choir	SW 1=Oct.Down, SW2 Oct. Up, Knob 5 = Frequency Speed, Knob 6 = Wet/Dry amount (Frequency Speed)
057	Vintage Solo 1 Knob	SW 1=Oct.Down, SW2 Oct. Up, Knob 5 = Frequency Speed, Knob 6 = Wet/Dry amount (Frequency Speed)
058	Vintage Solo 2 Knob	SW 1=Oct.Down, SW2 Oct. Up, Knob 5 = Frequency Speed, Knob 6 = Wet/Dry amount (Frequency Speed)
059	Vintage Solo 3 Knob	SW 1=Oct.Down, SW2 Oct. Up, Knob 5 = Frequency Speed, Knob 6 = Wet/Dry amount (Frequency Speed)
060	Vintage Solo 4 Knob	SW 1=Oct.Down, SW2 Oct. Up, Knob 5 = Frequency Speed, Knob 6 = Wet/Dry amount (Frequency Speed)
061	Vintage Solo 5 Knob	SW 1=Oct.Down, SW2 Oct. Up, Knob 5 = Frequency Speed, Knob 6 = Wet/Dry amount (Frequency Speed)
062	Vintage Solo 6 Knob	SW 1=Oct.Down, SW2 Oct. Up, Knob 5 = Frequency Speed, Knob 6 = Wet/Dry amount (Frequency Speed)
063	Vintage Solo 7 Knob	SW 1=Oct.Down, SW2 Oct. Up, Knob 5 = Frequency Speed, Knob 6 = Wet/Dry amount (Frequency Speed)



Kelfar Technologies EXs-186 Vintage Organs & Synths

**Combinations - U-B**

No.	Name	GENERAL INFORMATION
000	Vintage Orchestra 1	Volume Crossfade / Expreesion Pedal or JS -Y
001	Vintage Orchestra 2	Volume Crossfade / Expreesion Pedal or JS -Y
002	Vintage Orchestra 3	Volume Crossfade / Expreesion Pedal or JS -Y
003	Vintage Drawbars 1	Sliders 1-9 Volume, Slider 10 Click Volume
004	Vintage Drawbars 2	Sliders 1-9 Volume, Slider 10 Click Volume
005	Vintage Drawbars 3	Sliders 1-9 Volume, Slider 10 Click Volume
006	Vintage Drawbars 4	Sliders 1-9 Volume, Slider 10 Click Volume
007	Vintage Drawbars 5	Sliders 1-9 Volume, Slider 10 Click Volume
008	Vintage Drawbars 6	Sliders 1-9 Volume, Slider 10 Click Volume
009	Vintage Bass +Organ 1	Bass Split C4, Right Sound = Volume / Expression Pedal
010	Vintage Bass +Organ 2	Bass Split C4, Right Sound = Volume / Expression Pedal
011	Vintage Bass +Organ 3	Bass Split C4, Right Sound = Volume / Expression Pedal
012	Vintage Bass +Organ 4	Bass Split C4, Right Sound = Volume / Expression Pedal
013	Vintage Bass +Organ 5	Bass Split C4, Right Sound = Volume / Expression Pedal
014	Vintage Bass +Organ 6	Bass Split C4, Right Sound = Volume / Expression Pedal
015	Vintage Bass +Organ 7	Bass Split C4, Right Sound = Volume / Expression Pedal
016	Vintage Bass +Organ 8	Bass Split C4, Right Sound = Volume / Expression Pedal
017	Vintage Bass + OrgSpRev1	Bass Split C4, Right Sound = Volume / Expression Pedal
018	Vintage Bass + OrgSpRev2	Bass Split C4, Right Sound = Volume / Expression Pedal
019	Vintage Bass + OrgSpRev3	Bass Split C4, Right Sound = Volume / Expression Pedal
020	Vintage Bass + OrgSpRev4	Bass Split C4, Right Sound = Volume / Expression Pedal
021	Vintage Bass + OrgSpRev5	Bass Split C4, Right Sound = Volume / Expression Pedal
022	Vintage Bass + OrgSpRev6	Bass Split C4, Right Sound = Volume / Expression Pedal
023	Vintage Bass + OrgSpRev7	Bass Split C4, Right Sound = Volume / Expression Pedal
024	Vintage Bass + OrgSpRev8	Bass Split C4, Right Sound = Volume / Expression Pedal
025	Vintage Guitar + Organ 1	Bass Split D#4, Right Sound = Volume / Expression Pedal
026	Vintage Guitar + Organ 2	Bass Split D#4, Right Sound = Volume / Expression Pedal
027	Vintage Guitar + Organ 3	Bass Split D#4, Right Sound = Volume / Expression Pedal
028	Vintage Guitar + Organ 4	Bass Split D#4, Right Sound = Volume / Expression Pedal
029	Vintage Guitar + Organ 5	Bass Split D#4, Right Sound = Volume / Expression Pedal
030	Vintage Guitar + Organ 6	Bass Split D#4, Right Sound = Volume / Expression Pedal
031	Vintage Guitar + Organ 7	Bass Split D#4, Right Sound = Volume / Expression Pedal
032	Vintage Guitar + Organ 8	Bass Split D#4, Right Sound = Volume / Expression Pedal
033	Vintage Bass + Piano	Bass Split C4, Right Sound = Volume / Expression Pedal
034	Vintage Bass + PianoOct	Bass Split C4, Right Sound = Volume / Expression Pedal
035	Vintage Bass + ClaviCh.	Bass Split C4, Right Sound = Volume / Expression Pedal
036	Vintage Bass + Cello	Bass Split C4, Right Sound = Volume / Expression Pedal

## Kelfar Technologies EXs-186 Vintage Organs & Synths

037	Vintage Bass + Violin	Bass Split C4, Right Sound = Volume / Expression Pedal
038	Vintage Bass + Cello/Vio	Bass Split C4, Right Sound = Volume / Expression Pedal
039	Vintage Bass + EnStrings	Bass Split C4, Right Sound = Volume / Expression Pedal
040	Vintage Bass + OcStrings	Bass Split C4, Right Sound = Volume / Expression Pedal
041	Vintage Bass + LgStrings	Bass Split C4, Right Sound = Volume / Expression Pedal
042	Vintage Bass + CrmCello	Bass Split C4, Right Sound = Volume / Expression Pedal
043	Vintage Bass + CrmViolin	Bass Split C4, Right Sound = Volume / Expression Pedal
044	Vintage Bass +Ens.Brass1	Bass Split C4, Right Sound = Volume / Expression Pedal
045	Vintage Bass +Ens.Brass2	Bass Split C4, Right Sound = Volume / Expression Pedal
046	Vintage Bass + Egypt.Sax	Bass Split C4, Right Sound = Volume / Expression Pedal
047	Vintage Bass + Trumpet 1	Bass Split C4, Right Sound = Volume / Expression Pedal
048	Vintage Bass + Trumpet 2	Bass Split C4, Right Sound = Volume / Expression Pedal
049	Vintage Bass + E.Piano 1	Bass Split C4, Right Sound = Volume / Expression Pedal
050	Vintage Bass + E.Piano 2	Bass Split C4, Right Sound = Volume / Expression Pedal
051	Vintage Bass + 70'S EP	Bass Split C4, Right Sound = Volume / Expression Pedal
052	Vintage Bass + ClaviWah	Bass Split C4, Right Sound = Volume / Expression Pedal
053	Vintage Large Pads 1	SW 1=Oct.Down, SW2 Oct. Up,
054	Vintage Large Pads 2	SW 1=Oct.Down, SW2 Oct. Up,
055	Vintage Piano / Pads	Piano <> Pads =Volume / Expression Pedal
056	Vintage E.Piano 1 / Pads	Piano <> Pads =Volume / Expression Pedal
057	Vintage E.Piano 2 / Pads	Piano <> Pads =Volume / Expression Pedal
058	Vintage Choir / Pads	Karma On= Hold, Knob 5 = Frequency Speed, Knob 6 = Wet/Dry amount (Frequency Speed)
059	Vintage Choir/Str./Pads	Karma On= Hold, Knob 5 = Frequency Speed, Knob 6 = Wet/Dry amount (Frequency Speed)
060	Vintage Bass Band 1	Bass Split C4, Right Sound = Volume / Expression Pedal
061	Vintage Bass Band 2	Bass Split C4, Right Sound = Volume / Expression Pedal
062	Vintage Bass Band 3	Bass Split C4, Right Sound = Volume / Expression Pedal
063	Vintage Bass Band 4	Bass Split C4, Right Sound = Volume / Expression Pedal

### MultiSamples

No.	NAME
000	F.Organ 1
001	F.Organ 2
002	F.Organ 3
003	F.Organ 4
004	F.Organ 5
005	Int_Organ 1
006	Int_Organ 2
007	Int_Organ 3
008	Int_Piano
009	Int_ClaviChord
010	Int_Cello
011	Int_Violin
012	Int_Bass1
013	Int_Bass2
014	M.Sat_1
015	M.Sat_2
016	M.Sat_3
017	M.Sat_4
018	M.Sat_5
019	CRM_Cello
020	CRM_Violin
021	CRM_Bass
022	VintageGT1_Rev
023	VintageGT2_Rev
024	Vintage GT Phrases

### Karma GEs

Bank U-G

No.	NAME
000	Oud Tremolo
001	Kanun Tremolo