

EXs 188 Kelfar Expressive Strings  
Voice Name List / Guide



Kelfar Technologies  
Karim El-Far  
7486 Boris Court  
Rohnert Park, CA 94928  
USA  
Phone: (707) 664-9892  
Email: [info@kelfar.net](mailto:info@kelfar.net)

## Kelfar Expressive Strings

*Contents: Approximately 1.6 GB of PCM samples, 3876 samples [non-looped], 50 Multisamples Stereo, 100 Multisamples Mono, 44 Programs [U-CC], 64 Combis [U-A], 44 Wavesequences [U-FF/U-GG], 1 Drum Kits [U-FF].*

Thank you for your purchase of Kelfar Expressive Strings. You're about to experience an amazing feat of audio engineering – the recreation of a symphony orchestra's string section for the keyboard. We believe that Expressive Strings will astonish and delight you with its realistic portrayal of stringed instruments.

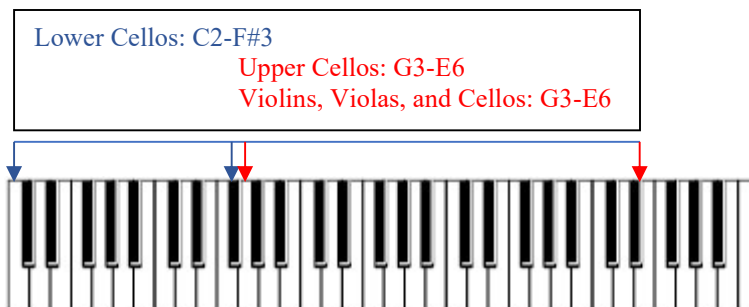
With the touch of a button, you'll be able to play the full string section of a symphony orchestra on your keyboard. Violins, violas, and cellos blend into an exquisite sound that can be used to compose your own music or play any piece you desire.

Kelfar Expressive Strings removes the separation between notes often found on electronic keyboard recreations of string instruments. The smooth sound mimics the tones created by the finest musicians.

It will take time to master this sound library to its fullest expression, but once you do, you'll find an astonishing variety of sounds to create and play right from your electronic keyboard.

For the best sound experience, we recommend utilizing key range C2 through E6, the notes available in the string section of a symphony orchestra.

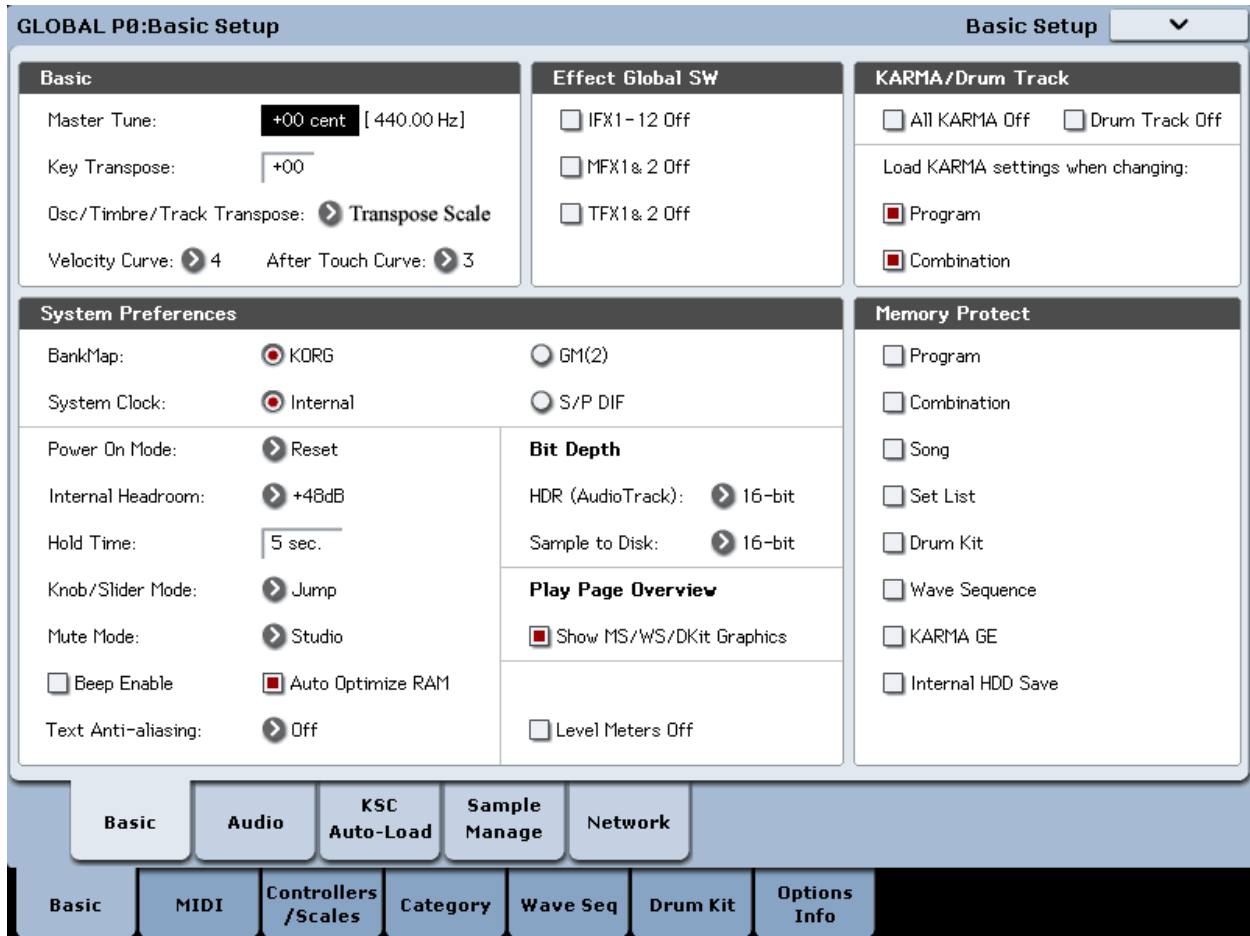
### Key Zones in Combinations: U-A



## Kelfar Technologies EXs-188 Kelfar Expressive Strings

Before using the EXs-188 Kelfar Expressive Strings, please make sure that the Korg Kronos has the following suggested default **Global** setup:

1. Press the button **Global**
2. Press the tab **Basic** on the touchscreen to access the **Global P0: Basic Setup**



By default, the **Osc/Timbre/Track Transpose** is set to "**Works Within Scale**". For the EXs-188 Kelfar Expressive Strings sound library to work properly, it is necessary to set the **Osc/Timbre/Track** to "**Transposes Scale**".

Optional: In some cases, the level meters may slightly decrease polyphony. If this occurs, enable the **Level Meter Off** option.

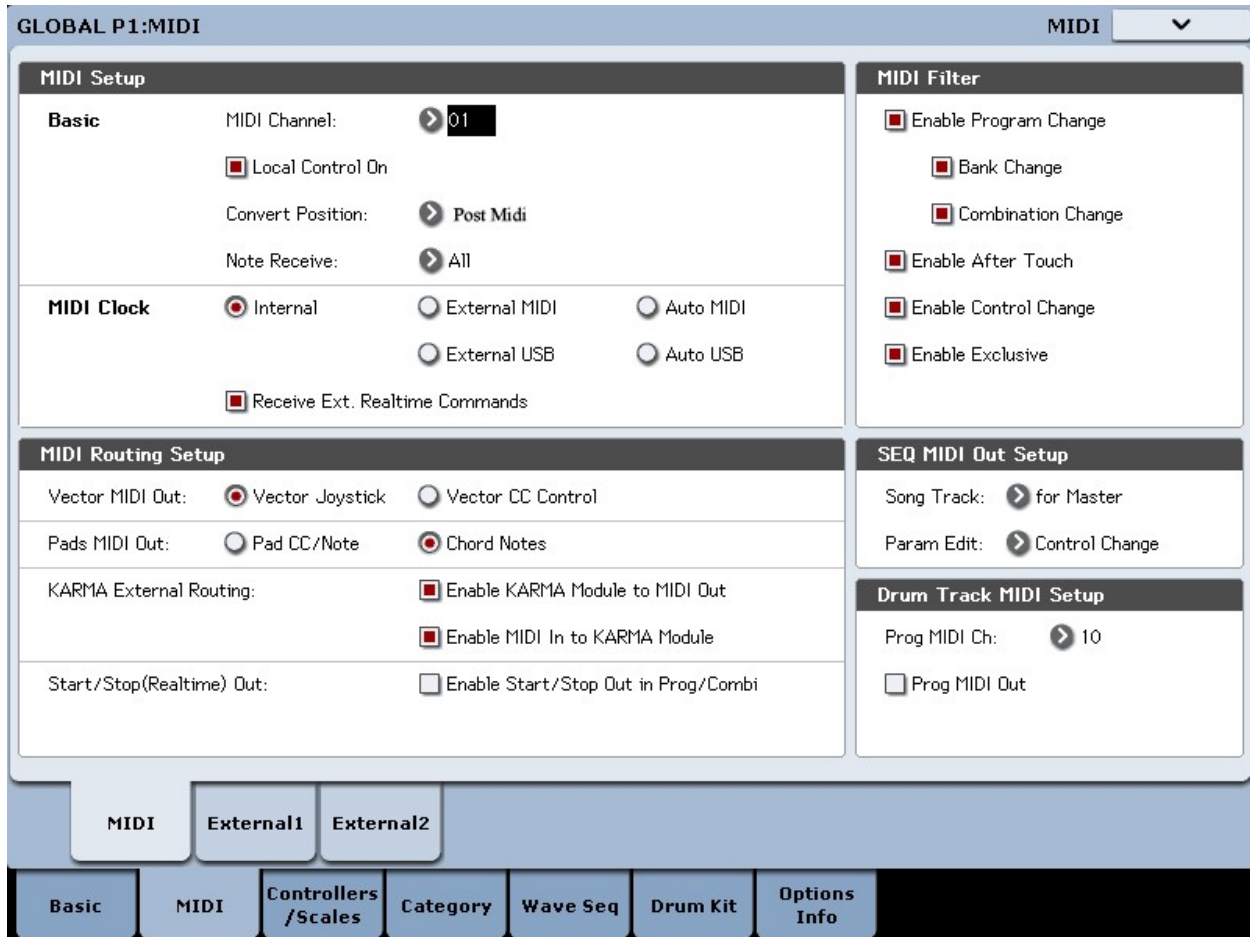
Be sure to **Write Global Setting** when modifying the data as follows:

1. Select **Write Global Setting** from the drop-menu, a dialog box will appear.
2. Press **OK** to write the data, or press cancel without writing the data.

You can also use the **SEQUENCER REC/WRITE** switch to write data in the same way as the **Write Global Setting** command.

## Kelfar Technologies EXs-188 Kelfar Expressive Strings

1. Press the button **Global**
2. Press the tab **Midi** on the touchscreen to access the **GLOBAL P1:MIDI**



By default, the **Convert Position** is set to "Pre Midi". For the EXs-188 Kelfar Expressive Strings sound library to work properly, it is necessary to set the **Convert Position** to "Post Midi".

Be sure to **Write Global Setting** when modifying the data as follows:

1. Select **Write Global Setting** from the drop-menu, a dialog box will appear.
2. Press **OK** to write the data, or press cancel without writing the data.

You can also use the **SEQUENCER REC/WRITE** switch to write data in the same way as the **Write Global Setting** command.

For your convenience, we have enabled the **RT KNOBS/KARMA (LED IS ON)** to take control of the sound in real time. However, check **page #4** for more assignable knobs, switches, and programs with Karma GE control.

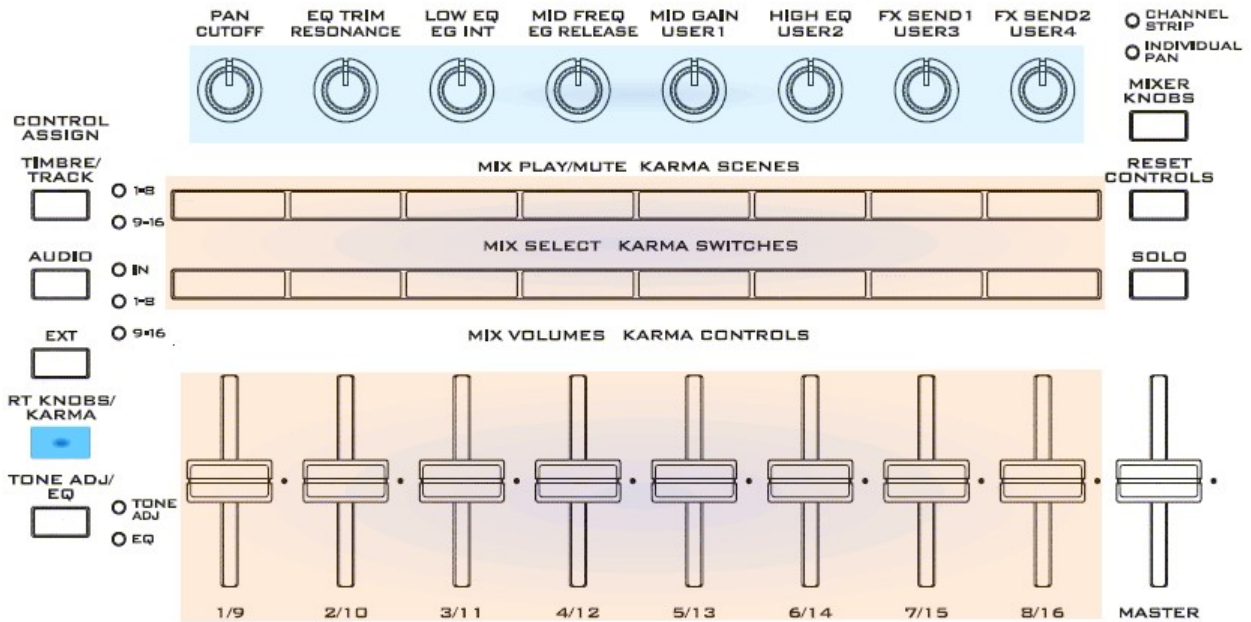
**From Korg Kronos Operation Guide:**

"The **Realtime Knobs** are a traditional feature of Korg workstations, combining modulation, quick edits, and hands-on control.

"In **RT KNOBS/KARMA** mode, **Knobs 1-4** have dedicated functions, as printed on the front panel: **Filter Cutoff, Filter Resonance, Filter EG Intensity, and Release Time**. All of these correspond to standard MIDI CCs."

**Common Realtime Controls: Knobs, Switches, Joystick, Vector Joystick, and Ribbon:**

<b>Knob 1 (CUTOFF)</b>	<b>SW1:</b>	<b>VELOCITY</b>
<b>Knob 2 (RESONANCE)</b>	<b>SW2:</b>	
<b>Knob 3 (EG INT)</b>	<b>JS +Y:</b>	
<b>Knob 4 (EG RELEASE)</b>	<b>JS -Y:</b>	
<b>Knob 5 (USER1):</b>	<b>JS -X:</b>	
<b>Knob 6 (USER2):</b>	<b>JS +X:</b>	
<b>Knob 7 (USER3):</b>	<b>MFx1</b>	<b>Ribbon:</b>
<b>Knob 8 (USER4):</b>	<b>MFx2</b>	<b>AFTER TOUCH</b>



## AMS (Alternate Modulation Source, Realtime Controls)

### ADSR (ATTACK DECAY SUSTAIN RELEASE)

For most combinations listed in the manual, all the AMS assignments and Real-Time Controls have been standardized. All AMS were programmed to cross-fade between previous notes and new notes. This provides another way to perform between the notes or play legato without creating any artifacts.

### ASSIGNABLE AMS

**J Y+ := Trill**

**J Y- := Pizzicato, Velocity: Staccato**

**J X- := Fast Gliss Down**

**J X+ := Fast Gliss Up**

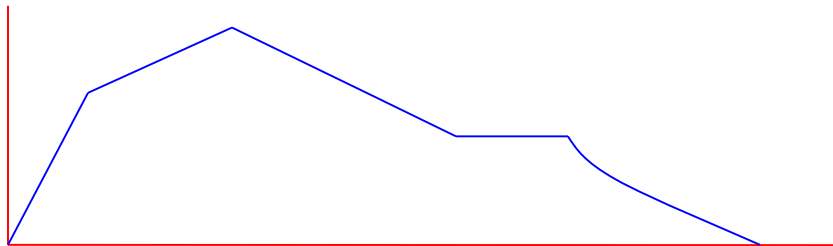
*Double AMS assignments when SW1 or SW2 are selected*

**SW1 + J Y+ := Tremolo**

**SW1 + J X- := Slow Gliss Down**

**SW2 + J X+ := Gliss Octave Up**

### ENVELOPE - A.D.S.R



The ADSR for the EXs Kelfar Expressive Strings has been programmed to play both fast and slow attack without any characteristic loss of the strings. In a bow instrument such as the violin, viola, or cello, we usually hear the first portion of the sounds of the bow attack plus the starting point of the melody. The EXs 188 does play like the real strings' envelope.

### Velocity

The sensitivity of the AMP Envelope Intensity has been set at a good number to control the AMP volume according to the velocity you apply when playing. The setting is good for playing both fast and slow phrases.

# Kelfar Technologies EXs-188 Kelfar Expressive Strings

## After Touch

When playing the strings, key pressure increases the volume. A good example of when to use After Touch is adding *Crescendo* to the strings.

## Expression Pedal

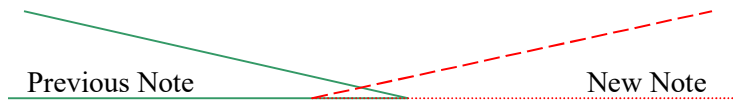
The use of an Expression pedal will add more expressiveness and dynamics to the Kelfar Expressive Strings. Many of the Combis are programmed to be used with Expression pedal and especially Combis 016 to 032 with Split keyboard zoning (C2-F#3).

## NanPad (optional)

Some of the Combis require the use of the Korg nanoPad to trigger the Pads or you may use the Kronos Pads to trigger them. \*Combis: A048 Ensemble Strings+Brass 1 and A049 Ensemble Strings+Brass 1

## Crossfade

By using the assignable switches and joystick, you can achieve a realistic and smooth transition between previous notes and new notes. For example, while playing the keys, move the J X- to 10% to crossfade between previous notes and new notes (i.e., D to C.)



## Kelfar Expressive Strings / Category

### Small to Large Orchestra

Combis: A000 to A015: These combis are arranged from small to large orchestra groups, and each one has Dark EQ and Bright EQ. As an example, A000 Kelfar Exp. Str. 1 has a Dark EQ while A001 Kelfar Exp. Str 2 has the Bright EQ.

### Bass Split Orchestra

Combis: A015 to A032. All the Bass (Contrabass) Split combis are programmed to be used with an Expression pedal to Fade in / out the Orchestra Strings while the Bass Split maintains its volume.

### Dynamic Strings with Velocity switching

Combis: A033 to A047. Each of the combis are programmed to respond to 6, 8, 12, and 16 Velocity switching dynamics. The EXs 188 does respond Dynamics' Note Velocity: ppp, pp, p, mp, mf, f, ff.

### Orchestra Strings 16 multi-timbral tracks

#### *A048 Ensemble Strings+Brass 1 and A049 Ensemble Strings+Brass 2*

This is a large sounding orchestra strings combined of both strings, brass instruments, and orchestral percussion: Timpani Splits SW2 Roll and Markee. By using the Expression pedal or **Knob 5**, you may fade in/out the strings independently from the rest of the instruments. This simulates a classical symphony orchestra.

To trigger the timpani, you may play it with velocity range *115-125* from Key Range C2 to F#3 or use the Kronos Pads 2-8 to trigger them.

To select the Kronos Pads: Touch ***EQ/Vector Control > Pads***

### Random Orchestra Strings

Combis: **A050 Random Orchestra Vel.** While performing with Velocity Switching the strings will play a new articulation from Key Range *C2 to G3* and *G3 to G#5*. The idea behind it is that in a real orchestra the players play different articulation for each part of the performance. This feature gives the orchestra strings a very realistic sound.

### Modern Strings

Combis: **A051 Exp. Dynamic Str 21'** and **A052 A Exp. Dynamic Str 21' B.** Many musicians from the *Mediterranean* and *Eastern European* regions like to add some portamento to the strings to blend the notes together and create a legato effect. These string effects are useful for live performance and especially if they are accompanied by beats.

### Legato Strings Articulations

Combis: **A053 to A055** the Legato is triggered by using the JS X-/+ . This renders a real orchestra bowing upward and downward. A053 OneThousandNights SW1-JX [One Thousand And One Nights] *ألف\_ليلة\_وليلة*; this is the title of



# Kelfar Technologies EXs-188 Kelfar Expressive Strings

a song for Umm Kulthum who was an Egyptian singer. The orchestra played the song, and the trills were performed in G/So minor.

## Cinematic Strings

Combis: They are useful to build cinematic strings for studio and live use. By using Knob 5 and 6 you can modulate the strings.

**A056 - Large Evo.Orch.Strings 1 (Bell Strings)**

**A057 - Large Evo.Orch.Strings 2 (Pads)**

**A058 - Large Evo.Orch.Strings 3 (Octave Strings)**

**A059 - Large Evo.Orch.Strings 4 (Choirs)**

## Staccato and Tremolo.

Combis: **A060 to A063** - One octave Major and Minor performed live from the Orchestra Strings. They can be triggered by using Korg Kronos Pads.

**Staccato Major Pads 1-8**

**Staccato Minor Pads 1-8**

**Tremolo Major Pads 1-8**

**Tremolo Minor Pads 1-8**

To select the Kronos Pads: Touch ***EQ/Vector Control*** > ***Pads***

COMBINATION P1:EQ/Vector/Controller Pads ▾

INT-A 000: Combination ♩ = 120.00

Chord Assign Enable Pad Play Fixed Velocity

**Pads (touch to play)**

	1	2	3	4	5	6	7	8
LOUD	1 Gch	2 Gch	3 Gch	4 Gch	5 Gch	6 Gch	7 Gch	8 Gch
NOTE	G5	C2	D2	D5	G4	E5	A4	B5
VEL	099	099	087	102	102	102	093	093
	B5	A5	F#5	A4	C2	B4	D5	F#5
	099	102	084	102	096	105	102	099
	D5	C3	A4	G5	C5	A4	E5	B4
	099	102	087	093	090	102	102	102
	A4	G5	D5	G4	D4	A5	A5	C#5
	099	099	090	093	105	090	090	105
	E2	D6	A5	B1	E5	C#3	D2	D#3
	099	096	087	087	090	096	099	093
	E3	D5	D3	B2	C3	C#2	D3	D#2
	099	102	099	102	099	096	102	096
	Off	Off	Off	Off	Off	Off	Off	Off
	064	064	064	064	064	064	064	064
	Off	Off	Off	Off	Off	Off	Off	Off
	064	064	064	064	064	064	064	064
SOFT								

PLAY POSITION = VELOCITY

Timbre EQ Drum Track Vector Volume Vector CC Vector Envelope Controllers Pads

Play EQ/Vector /Control Timbre Parameter MIDI Filter /Zones KARMA IFX MFX/TFX

## Kelfar Technologies EXs-188 Kelfar Expressive Strings

### Voice Name List

#### PROGRAMS U-CC

U-CC000	Kelfar Exp. Strings 1 mp	Program
U-CC001	Kelfar Exp. Strings 2 mf	Program
U-CC002	Kelfar Exp. Strings 3 mp	Program
U-CC003	Kelfar Exp. Strings 4 mf	Program
U-CC004	Kelfar Exp. Strings 5 p	Program
U-CC005	Kelfar Exp. Strings 6 mp	Program
U-CC006	Kelfar Exp.Fast Bow 1 f	Program
U-CC007	Kelfar Exp.Fast Bow 2 ff	Program
U-CC008	Kelfar EX Strings A mp	Program
U-CC009	Kelfar EX Strings B mf	Program
U-CC010	Kelfar EX Strings C mp	Program
U-CC011	Kelfar EX Strings D mf	Program
U-CC012	Kelfar EX Strings E p	Program
U-CC013	Kelfar EX Strings F mp	Program
U-CC014	Contrabass	Program
U-CC015	Pizz. Trill Trem. JY	Program
U-CC016	Fast Gliss Up/Down JS X	Program
U-CC017	Portamento Up/Down	Program
U-CC018	3 Notes Up/ Down JS X	Program
U-CC019	Kelfar Exp. Staccato	Program
U-CC020	Kelfar Exp. Pizzicato mp	Program
U-CC021	Kelfar Exp. Pizzicato mf	Program
U-CC022	Low Bass/Cello	Program
U-CC023	Kelfar Exp. Lower Cellos	Program
U-CC024	Kelfar Exp. Upper Cellos	Program
U-CC025	Warm Orchestra 4 Dynamic	Program
U-CC026	Exp. 6 Dynamic Strings 1	Program
U-CC027	Exp. 8 Dynamic Strings 2	Program
U-CC028	Exp.16 Dynamic Strings 3	Program
U-CC029	EXs. 6 Dynamic Strings 1	Program
U-CC030	EXs.12 Dynamic Strings 2	Program
U-CC031	Timpani Splits SW2 Roll1	Program
U-CC032	Orch./Ethnic Kit (Mono)	Program
U-CC033	Marktree	Program
U-CC034	Fast Gliss Up/Dn M JS X	Program
U-CC035	Kelfar Exp.LowerCellos A	Program
U-CC036	Kelfar Exp.UpperCellos B	Program
U-CC037	Random Performance G3~D5	Program
U-CC038	Random Performance C2~G2	Program
U-CC039	Random Performance G3~C4	Program
U-CC040	Kelfar ExpStaccato Major	Program
U-CC041	Kelfar ExpStaccato Minor	Program
U-CC042	Kelfar ExpTremollo Major	Program
U-CC043	Kelfar ExpTremollo Minor	Program

## Kelfar Technologies EXs-188 Kelfar Expressive Strings

### COMBINATIONS U-A

U-A000	Kelfar Exp. Str. 1	Combi	U-A032	Bass / 16Dyn.Str+Cellos	Combi
U-A001	Kelfar Exp. Str. 2	Combi	U-A033	Exp. 6 Dynamic Strings	Combi
U-A002	Kelfar Exp.Str.Cellos 1	Combi	U-A034	Exp. 8 Dynamic Strings	Combi
U-A003	Kelfar Exp.Str.Cellos 2	Combi	U-A035	Exp. 16 Dynamic Strings	Combi
U-A004	Kelfar Exp. Str.Slow 1	Combi	U-A036	EXs. 6 Dynamic Strings 1	Combi
U-A005	Kelfar Exp. Str.Slow 2	Combi	U-A037	EXs.12 Dynamic Strings 2	Combi
U-A006	Kelfar Exp.Str.Sl.Cel. 1	Combi	U-A038	Exp.16 Dyn. Str + Cellos	Combi
U-A007	Kelfar Exp.Str.Sl.Cel. 2	Combi	U-A039	Exp. 6 Dyn. Str + Cellos	Combi
U-A008	Kelfar Exp. Str & Ex 1	Combi	U-A040	Exp. 8 Dyn. Str + Cellos	Combi
U-A009	Kelfar Exp. Str & Ex 2	Combi	U-A041	EXs. 6 Dyn. Str+Cellos 1	Combi
U-A010	Kelfar Exp.Str&ExCellos1	Combi	U-A042	EXs.12 Dyn. Str+Cellos 2	Combi
U-A011	Kelfar Exp.Str&ExCellos2	Combi	U-A043	Exp. 6 Dynamic Quartet 1	Combi
U-A012	Kelfar Exp. Str & Ex 1A	Combi	U-A044	Exp. 8 Dynamic Quartet 2	Combi
U-A013	Kelfar Exp. Str & Ex 2B	Combi	U-A045	Exp.16 Dynamic Quartet 3	Combi
U-A014	Kelfar Exp.Str&ExCello1A	Combi	U-A046	Warm Orchestra Strings	Combi
U-A015	Kelfar Exp.Str&ExCello2B	Combi	U-A047	Warm Orch. Str + Cellos	Combi
U-A016	Bass / Exp. Str. 1	Combi	U-A048	Ensemble Strings+Brass 1	Combi
U-A017	Bass / Exp. Str. 2	Combi	U-A049	Ensemble Strings+Brass 2	Combi
U-A018	Bass / Exp.Str.Cellos 1	Combi	U-A050	Random Orchestra Vel.	Combi
U-A019	Bass / Exp.Str.Cellos 2	Combi	U-A051	Exp. Dynamic Str 21' A	Combi
U-A020	Bass / Exp. Str.Slow 1	Combi	U-A052	Exp. Dynamic Str 21' B	Combi
U-A021	Bass / Exp. Str.Slow 2	Combi	U-A053	OneThousandNights SW1-JX	Combi
U-A022	Bass / Exp.Str.Sl.Cel. 1	Combi	U-A054	Exp. 3 Notes Str. SW2+JX	Combi
U-A023	Bass / Exp.Str.Sl.Cel. 2	Combi	U-A055	Exp.Legato Strings +/-JX	Combi
U-A024	Bass / Exp. Str & Ex 1	Combi	U-A056	Large Evo.Orch.Strings 1	Combi
U-A025	Bass / Exp. Str & Ex 2	Combi	U-A057	Large Evo.Orch.Strings 2	Combi
U-A026	Bass / Exp.Str&ExCellos1	Combi	U-A058	Large Evo.Orch.Strings 3	Combi
U-A027	Bass / Exp.Str&ExCellos2	Combi	U-A059	Large Evo.Orch.Strings 4	Combi
U-A028	Bass / Exp. Str & Ex 1A	Combi	U-A060	Staccato Major Pads 1-8	Combi
U-A029	Bass / Exp. Str & Ex 2B	Combi	U-A061	Staccato Minor Pads 1-8	Combi
U-A030	Bass / Exp.Str&ExCello1A	Combi	U-A062	Tremollo Major Pads 1-8	Combi
U-A031	Bass / Exp.Str&ExCello2B	Combi	U-A063	Tremollo Minor Pads 1-8	Combi

### DRUM KITS U-FF

U-FF000	Orch./Ethnic Kit (Mono)	DrumKit
---------	-------------------------	---------

## Kelfar Technologies EXs-188 Kelfar Expressive Strings

### WaveSequences U-FF/U-GG

U-FF000	Kelfar Exp. Strings1 mp	WaveSequence
U-FF001	Kelfar Exp. Strings2 mf	WaveSequence
U-FF002	Kelfar Exp. Strings3 mp	WaveSequence
U-FF003	Kelfar Exp. Strings4 mf	WaveSequence
U-FF004	Kelfar Exp S.Strings1 p	WaveSequence
U-FF005	Kelfar Exp S.Strings1 mp	WaveSequence
U-FF006	Kelfar EX.Strings1 mp	WaveSequence
U-FF007	Kelfar EX.Strings2 mf	WaveSequence
U-FF008	Kelfar EX.Strings3 mp	WaveSequence
U-FF009	Kelfar EX.Strings4 mf	WaveSequence
U-FF010	Kelfar S.EX.Strings5 p	WaveSequence
U-FF011	Kelfar S.EX.Strings6 mp	WaveSequence
U-FF012	Str Trill / Tremollo SW1	WaveSequence
U-FF013	Str Fast Gliss Up /Oct	WaveSequence
U-FF014	Str Fast Gliss Down	WaveSequence
U-FF015	Str Pizz mp	WaveSequence
U-FF016	Str Pizz mf	WaveSequence
U-FF017	Str Gliss 3 Notes SW2	WaveSequence
U-FF018	Str Porto Down	WaveSequence
U-FF019	Str Porto Up	WaveSequence
U-FF020	Str Staccato JY -	WaveSequence
U-FF021	Staccato	WaveSequence
U-FF022	Pizzicato mp	WaveSequence
U-FF023	Pizzicato mf	WaveSequence
U-FF024	Kelfar Exp Fast Bow f	WaveSequence
U-FF025	Kelfar Exp Fast Bow ff	WaveSequence
U-FF026	Kelfar Ensemble Strings	WaveSequence
U-FF027	Kelfar Exp 1Cello	WaveSequence
U-FF028	Kelfar Exp 2Cello	WaveSequence
U-FF029	Kelfar Analog Strings 1	WaveSequence
U-FF030	Kelfar Analog Strings 2	WaveSequence
U-FF031	Str Fast Gliss/Dn Minor	WaveSequence
U-GG000	Orchestra Strings mp	WaveSequence
U-GG001	Orchestra Strings mf	WaveSequence
U-GG002	Orchestra Strings f	WaveSequence
U-GG003	Orchestra Strings ff	WaveSequence
U-GG004	Exp Orchestra Strings pp	WaveSequence
U-GG005	Exp Orchestra Strings p	WaveSequence
U-GG006	Exp Orchestra Strings mp	WaveSequence
U-GG007	Exp Orchestra Strings mf	WaveSequence
U-GG008	Exp Orchestra Strings f	WaveSequence
U-GG009	Exp Orchestra Strings ff	WaveSequence
U-GG010	Kelfar Exp Lower Cellos	WaveSequence
U-GG011	Kelfar Exp Upper Cellos	WaveSequence

## Kelfar Technologies EXs-188 Kelfar Expressive Strings

### Multisamples (Stereo)

MS00-Fast Strings A mp	MS25-Contrabass mp
MS01-Fast Strings B mf	MS26-Contrabass mf
MS02-Fast Strings C mp	MS27-Lower Strings
MS03-Fast Strings D mf	MS28-Phrases 1
MS04-Slow Strings A p	MS29-Phrases 2
MS05-Slow Strings B mp	MS30-EX_Strings1A_mp
MS06-Med Strings A f	MS31-EX_Strings1B_mf
MS07-Med Strings B ff	MS32-EX_Strings2A_mp
MS08-Pizzicato mp	MS33-EX_Strings2B_mf
MS09-Pizzicato mf	MS34-EX_Strings3A_mp
MS10-Staccato	MS35-EX_Strings3B_mf
MS11-Staccato Major	MS36-1Cello
MS12-Staccato Minor	MS37-2Cellos
MS13-Tremolo	MS38-Orchestra Strings mp
MS14-Tremolo Major	MS39-Orchestra Strings mf
MS15-Tremolo Minor	MS40-Orchestra Strings f
MS16-Trill	MS41-Orchestra Strings ff
MS17-Trill Minor	MS42-Exp Orchestra pp
MS18-Fast Gliss Up	MS43-Exp Orchestra p
MS19-Gliss Up Oct	MS44-Exp Orchestra mp
MS20-Fast Gliss Down	MS45-Exp Orchestra mf
MS21-Slow Gliss Down	MS46-Exp Orchestra f
MS22-3 Notes Gliss	MS47-Exp Orchestra ff
MS23-PortoStr_Up	MS48-Lower Cellos
MS24-PortoStr_Down	MS49-Upper Cellos

Kelfar Technologies EXs-188 Kelfar Expressive Strings

**MultiSamples (Mono)**

MS00-Fast Strings A mp -L	MS50-Contrabass mp -L
MS01-Fast Strings A mp -R	MS51-Contrabass mp -R
MS02-Fast Strings B mf -L	MS52-Contrabass mf -L
MS03-Fast Strings B mf -R	MS53-Contrabass mf -R
MS04-Fast Strings C mp -L	MS54-Lower Strings -L
MS05-Fast Strings C mp -R	MS55-Lower Strings -R
MS06-Fast Strings D mf -L	MS56-Phrases 1 -L
MS07-Fast Strings D mf -R	MS57-Phrases 1 -R
MS08-Slow Strings A p -L	MS58-Phrases 2 -L
MS09-Slow Strings A p -R	MS59-Phrases 2 -R
MS10-Slow Strings B mp -L	MS60-EX Strings1A mp -L
MS11-Slow Strings B mp -R	MS61-EX Strings1A mp -R
MS12-Med Strings A f -L	MS62-EX Strings1B mf -L
MS13-Med Strings A f -R	MS63-EX Strings1B mf -R
MS14-Med Strings B ff -L	MS64-EX Strings2A mp -L
MS15-Med Strings B ff -R	MS65-EX Strings2A mp -R
MS16-Pizzicato mp -L	MS66-EX Strings2B mf -L
MS17-Pizzicato mp -R	MS67-EX Strings2B mf -R
MS18-Pizzicato mf -L	MS68-EX Strings3A mp -L
MS19-Pizzicato mf -R	MS69-EX Strings3A mp -R
MS20-Staccato -L	MS70-EX Strings3B mf -L
MS21-Staccato -R	MS71-EX Strings3B mf -R
MS22-Staccato Major -L	MS72-1Cello -L
MS23-Staccato Major -R	MS73-1Cello -R
MS24-Staccato Minor -L	MS74-2Cellos -L
MS25-Staccato Minor -R	MS75-2Cellos -R
MS26-Tremolo -L	MS76-Orchestra Strings mp -L
MS27-Tremolo -R	MS77-Orchestra Strings mp -R
MS28-Tremolo Major -L	MS78-Orchestra Strings mf -L
MS29-Tremolo Major -R	MS79-Orchestra Strings mf -R
MS30-Tremolo Minor -L	MS80-Orchestra Strings f -L
MS31-Tremolo Minor -R	MS81-Orchestra Strings f -R
MS32-Trill -L	MS82-Orchestra Strings ff -L
MS33-Trill -R	MS83-Orchestra Strings ff -R
MS34-Trill Minor -L	MS84-Exp Orchestra pp -L
MS35-Trill Minor -R	MS85-Exp Orchestra pp -R
MS36-Fast Gliss Up -L	MS86-Exp Orchestra p -L
MS37-Fast Gliss Up -R	MS87-Exp Orchestra p -R
MS38-Gliss Up Oct -L	MS88-Exp Orchestra mp -L
MS39-Gliss Up Oct -R	MS89-Exp Orchestra mp -R
MS40-Fast Gliss Down -L	MS90-Exp Orchestra mf -L
MS41-Fast Gliss Down -R	MS91-Exp Orchestra mf -R
MS42-Slow Gliss Down -L	MS92-Exp Orchestra f -L
MS43-Slow Gliss Down -R	MS93-Exp Orchestra f -R
MS44-3 Notes Gliss -L	MS94-Exp Orchestra ff -L
MS45-3 Notes Gliss -R	MS95-Exp Orchestra ff -R
MS46-PortoStr Up -L	MS96-Lower Cellos -L
MS47-PortoStr Up -R	MS97-Lower Cellos -R
MS48-PortoStr Down -L	MS98-Upper Cellos -L
MS49-PortoStr Down -R	MS99-Upper Cellos -R